



**ELECTRONIC COPY**

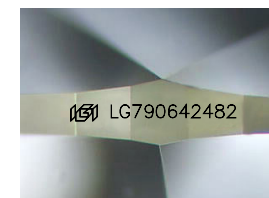
LG790642482  
Report verification at igi.org



May 23, 2026  
IGI Report Number **LG790642482**  
Description **LABORATORY GROWN DIAMOND**

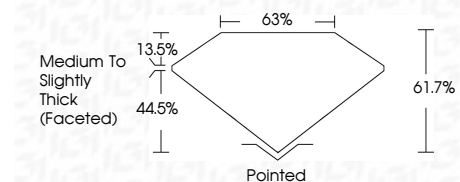
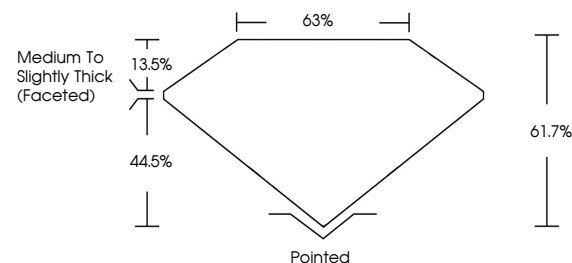
Shape and Cutting Style **PEAR BRILLIANT**  
Measurements **19.07 X 12.06 X 7.44 MM**

**GRADING RESULTS**  
Carat Weight **10.04 CARATS**  
Color Grade **E**  
Clarity Grade **VVS 2**

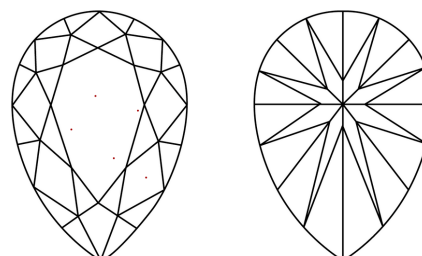


Sample Image Used

**PROPORTIONS**



**CLARITY CHARACTERISTICS**



**KEY TO SYMBOLS**

Red symbols indicate internal characteristics.  
Green symbols indicate external characteristics.

**COLOR**

D E F G H I J Faint Very Light Light

**CLARITY**

FL	IF	VVS <sup>1-2</sup>	VS <sup>1-2</sup>	SI <sup>1-2</sup>	I <sup>1-3</sup>
Flawless	Internally Flawless	Very Very Slightly Included	Very Slightly Included	Slightly Included	Included

**ADDITIONAL GRADING INFORMATION**

Polish **EXCELLENT**  
Symmetry **EXCELLENT**  
Fluorescence **NONE**  
Inscription(s) **IGI LG790642482**  
Comments: This Laboratory Grown Diamond was created by Chemical Vapor Deposition (CVD) growth process. Type IIa



**IGI**



May 23, 2026  
IGI Report No LG790642482  
**PEAR BRILLIANT**  
19.07 X 12.06 X 7.44 MM  
10.04 CARATS  
E  
VVS 2  
61.7%  
63%  
Medium to Slightly Thick (Faceted)  
Pointed  
EXCELLENT  
EXCELLENT  
NONE  
IGI LG790642482

Comments: This Laboratory Grown Diamond was created by Chemical Vapor Deposition (CVD) growth process. Type IIa