



**ELECTRONIC COPY**

LG790642436  
Report verification at igi.org



May 21, 2026

IGI Report Number **LG790642436**

Description **LABORATORY GROWN DIAMOND**

Shape and Cutting Style **PEAR BRILLIANT**

Measurements **17.04 X 10.97 X 6.57 MM**

**GRADING RESULTS**

Carat Weight **7.06 CARATS**

Color Grade **FANCY VIVID PINK**

Clarity Grade **VVS 1**

May 21, 2026  
IGI Report Number **LG790642436**  
Description **LABORATORY GROWN DIAMOND**  
Shape and Cutting Style **PEAR BRILLIANT**  
Measurements **17.04 X 10.97 X 6.57 MM**

**GRADING RESULTS**

Carat Weight **7.06 CARATS**

Color Grade **FANCY VIVID PINK**

Clarity Grade **VVS 1**

**ADDITIONAL GRADING INFORMATION**

Polish **EXCELLENT**

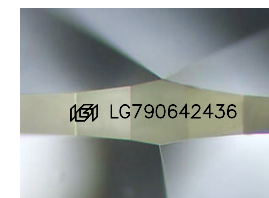
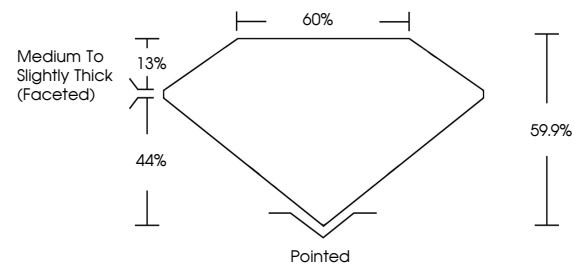
Symmetry **EXCELLENT**

Fluorescence **SLIGHT**

Inscription(s) **IGI LG790642436**

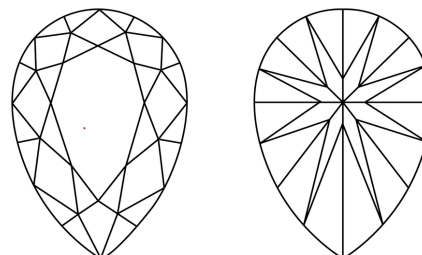
Comments: This Laboratory Grown Diamond was created by Chemical Vapor Deposition (CVD) growth process.  
Indications of post-growth treatment.

**PROPORTIONS**



Sample Image Used

**CLARITY CHARACTERISTICS**



**KEY TO SYMBOLS**

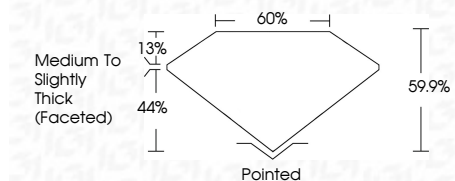
Red symbols indicate internal characteristics.  
Green symbols indicate external characteristics.

**COLOR**

D E F G H I J Faint Very Light Light

**CLARITY**

FL	IF	VVS <sup>1-2</sup>	VS <sup>1-2</sup>	SI <sup>1-2</sup>	I <sup>1-3</sup>
Flawless	Internally Flawless	Very Very Slightly Included	Very Slightly Included	Slightly Included	Included



**ADDITIONAL GRADING INFORMATION**

Polish **EXCELLENT**

Symmetry **EXCELLENT**

Fluorescence **SLIGHT**

Inscription(s) **IGI LG790642436**

Comments: This Laboratory Grown Diamond was created by Chemical Vapor Deposition (CVD) growth process.  
Indications of post-growth treatment.



**IGI**



May 21, 2026  
IGI Report No LG790642436  
PEAR BRILLIANT

7.06 CARATS  
FANCY VIVID PINK

VVS 1  
60%  
59.9%

Medium to Slightly Thick (Faceted)

Pointed  
EXCELLENT  
EXCELLENT  
SLIGHT  
IGI LG790642436

Comments: This Laboratory Grown Diamond was created by Chemical Vapor Deposition (CVD) growth process.  
Indications of post-growth treatment.