



**ELECTRONIC COPY**

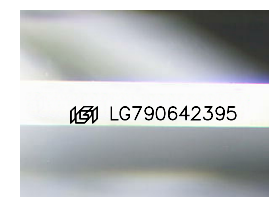
LG790642395  
Report verification at igi.org



May 21, 2026  
IGI Report Number **LG790642395**  
Description **LABORATORY GROWN DIAMOND**

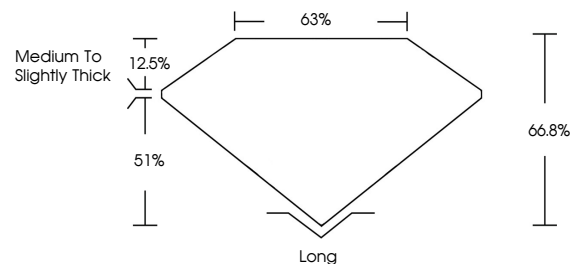
Shape and Cutting Style **EMERALD CUT**  
Measurements **16.96 X 11.50 X 7.68 MM**

**GRADING RESULTS**  
Carat Weight **15.13 CARATS**  
Color Grade **F**  
Clarity Grade **VVS 2**

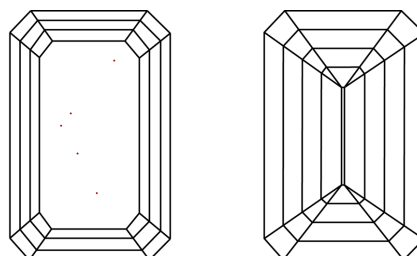


Sample Image Used

**PROPORTIONS**



**CLARITY CHARACTERISTICS**



**KEY TO SYMBOLS**

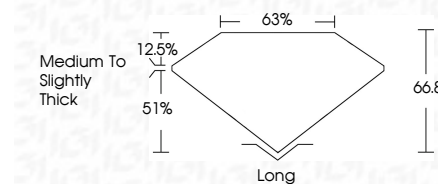
Red symbols indicate internal characteristics.  
Green symbols indicate external characteristics.

**COLOR**

D E F G H I J Faint Very Light Light

**CLARITY**

FL	IF	VVS <sup>1-2</sup>	VS <sup>1-2</sup>	SI <sup>1-2</sup>	I <sup>1-3</sup>
Flawless	Internally Flawless	Very Very Slightly Included	Very Slightly Included	Slightly Included	Included



**ADDITIONAL GRADING INFORMATION**

Polish **EXCELLENT**  
Symmetry **EXCELLENT**  
Fluorescence **NONE**  
Inscription(s) **IGI LG790642395**  
Comments: This Laboratory Grown Diamond was created by Chemical Vapor Deposition (CVD) growth process. Type IIa



May 21, 2026  
IGI Report No LG790642395  
**EMERALD CUT**  
16.96 X 11.50 X 7.68 MM  
Carat Weight **15.13 CARATS**  
Color Grade **F**  
Clarity Grade **VVS 2**  
Depth **66.8%**  
Table **63%**  
Girdle **Medium to Slightly Thick**  
Culet **Long**  
Polish **EXCELLENT**  
Symmetry **EXCELLENT**  
Fluorescence **NONE**  
Inscription(s) **IGI LG790642395**

Comments: This Laboratory Grown Diamond was created by Chemical Vapor Deposition (CVD) growth process. Type IIa