



ELECTRONIC COPY

LG790642140
Report verification at igi.org



May 14, 2026
IGI Report Number LG790642140
Description LABORATORY GROWN DIAMOND
Shape and Cutting Style CUT CORNERED RECTANGULAR MODIFIED BRILLIANT
Measurements 17.52 X 12.18 X 8.05 MM
GRADING RESULTS
Carat Weight 15.01 CARATS
Color Grade F
Clarity Grade VVS 2

May 14, 2026
IGI Report Number LG790642140
Description LABORATORY GROWN DIAMOND
Shape and Cutting Style CUT CORNERED RECTANGULAR MODIFIED BRILLIANT
Measurements 17.52 X 12.18 X 8.05 MM

GRADING RESULTS

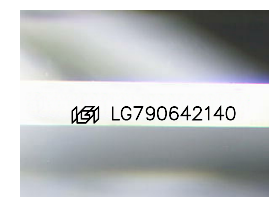
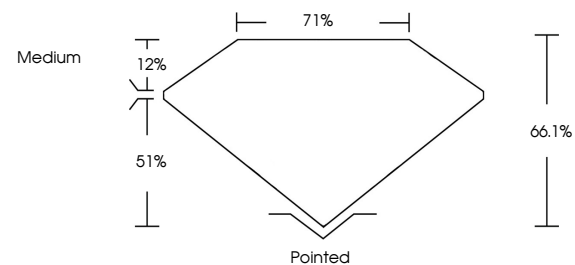
Carat Weight 15.01 CARATS
Color Grade F
Clarity Grade VVS 2

ADDITIONAL GRADING INFORMATION

Polish EXCELLENT
Symmetry EXCELLENT
Fluorescence NONE
Inscription(s) LG790642140

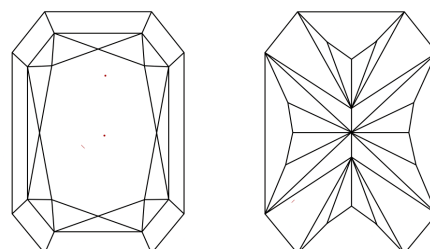
Comments: This Laboratory Grown Diamond was created by Chemical Vapor Deposition (CVD) growth process. Type IIa

PROPORTIONS



Sample Image Used

CLARITY CHARACTERISTICS



KEY TO SYMBOLS

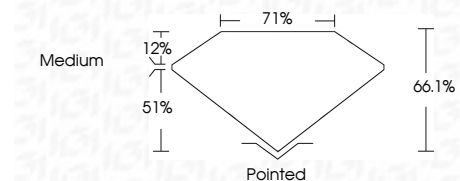
Red symbols indicate internal characteristics.
Green symbols indicate external characteristics.

COLOR

D E F G H I J Faint Very Light Light

CLARITY

FL IF VVS 1-2 VS 1-2 SI 1-2 I 1-3
Flawless Internally Flawless Very Very Slightly Included Very Slightly Included Slightly Included Included



ADDITIONAL GRADING INFORMATION

Polish EXCELLENT
Symmetry EXCELLENT
Fluorescence NONE
Inscription(s) LG790642140
Comments: This Laboratory Grown Diamond was created by Chemical Vapor Deposition (CVD) growth process. Type IIa



May 14, 2026
IGI Report No LG790642140
CUT CORNERED RECT. MODIFIED BRILLIANT
15.01 CARATS
F
VVS 2
66.1%
71%
Medium
Pointed
EXCELLENT
EXCELLENT
NONE
Inscription(s) LG790642140
Comments: This Laboratory Grown Diamond was created by Chemical Vapor Deposition (CVD) growth process. Type IIa