



**ELECTRONIC COPY**

LG790636472  
Report verification at igi.org



April 28, 2026

IGI Report Number **LG790636472**

Description **LABORATORY GROWN DIAMOND**

Shape and Cutting Style **ROUND BRILLIANT**

Measurements **10.28 - 10.35 X 6.10 MM**

**GRADING RESULTS**

Carat Weight **4.01 CARATS**

Color Grade **E**

Clarity Grade **VVS 2**

Cut Grade **VERY GOOD**

April 28, 2026  
IGI Report Number **LG790636472**  
Description **LABORATORY GROWN DIAMOND**  
Shape and Cutting Style **ROUND BRILLIANT**  
Measurements **10.28 - 10.35 X 6.10 MM**

**GRADING RESULTS**

Carat Weight **4.01 CARATS**

Color Grade **E**

Clarity Grade **VVS 2**

Cut Grade **VERY GOOD**

**ADDITIONAL GRADING INFORMATION**

Polish **EXCELLENT**

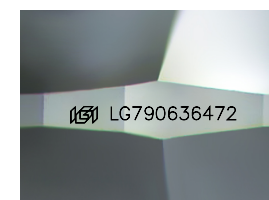
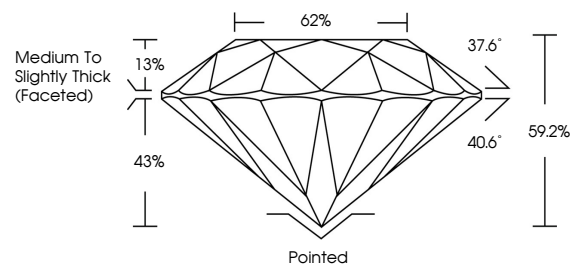
Symmetry **EXCELLENT**

Fluorescence **NONE**

Inscription(s) **IGI LG790636472**

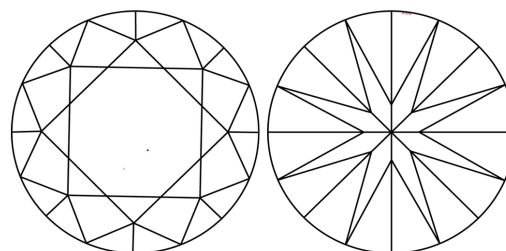
Comments: This Laboratory Grown Diamond was created by Chemical Vapor Deposition (CVD) growth process.  
Type IIa

**PROPORTIONS**



Sample Image Used

**CLARITY CHARACTERISTICS**



**KEY TO SYMBOLS**

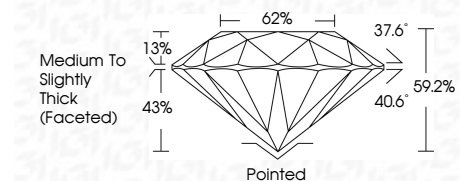
Red symbols indicate internal characteristics.  
Green symbols indicate external characteristics.

**COLOR**

D E F G H I J Faint Very Light Light

**CLARITY**

FL	IF	VVS <sup>1-2</sup>	VS <sup>1-2</sup>	SI <sup>1-2</sup>	I <sup>1-3</sup>
Flawless	Internally Flawless	Very Very Slightly Included	Very Slightly Included	Slightly Included	Included



**ADDITIONAL GRADING INFORMATION**

Polish **EXCELLENT**

Symmetry **EXCELLENT**

Fluorescence **NONE**

Inscription(s) **IGI LG790636472**

Comments: This Laboratory Grown Diamond was created by Chemical Vapor Deposition (CVD) growth process.  
Type IIa



**IGI**



April 28, 2026  
IGI Report No LG790636472  
**ROUND BRILLIANT**  
Carat Weight **4.01 CARATS**  
Color Grade **E**  
Clarity Grade **VVS 2**  
Cut Grade **VERY GOOD**  
Depth **59.2%**  
Table **62%**  
Girdle **Medium To Slightly Thick (Faceted)**  
Culet **Pointed**  
Polish **EXCELLENT**  
Symmetry **EXCELLENT**  
Fluorescence **NONE**  
Inscription(s) **IGI LG790636472**  
Comments: This Laboratory Grown Diamond was created by Chemical Vapor Deposition (CVD) growth process.  
Type IIa