



ELECTRONIC COPY

LG790633903 Report verification at igi.org



April 8, 2026 IGI Report Number LG790633903 Description LABORATORY GROWN DIAMOND Shape and Cutting Style CUT CORNERED RECTANGULAR MODIFIED BRILLIANT Measurements 11.25 X 7.80 X 5.34 MM GRADING RESULTS Carat Weight 3.96 CARATS Color Grade E Clarity Grade VVS 2

LABORATORY GROWN DIAMOND REPORT

April 8, 2026 IGI Report Number LG790633903 Description LABORATORY GROWN DIAMOND Shape and Cutting Style CUT CORNERED RECTANGULAR MODIFIED BRILLIANT Measurements 11.25 X 7.80 X 5.34 MM

GRADING RESULTS

Carat Weight 3.96 CARATS Color Grade E Clarity Grade VVS 2

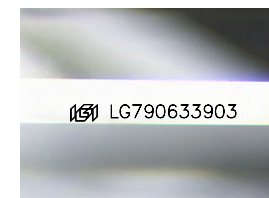
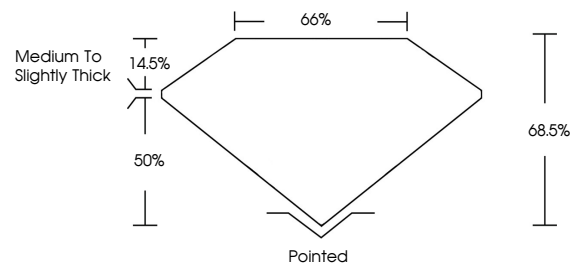
ADDITIONAL GRADING INFORMATION

Polish EXCELLENT Symmetry EXCELLENT Fluorescence NONE

Inscription(s) IGI LG790633903

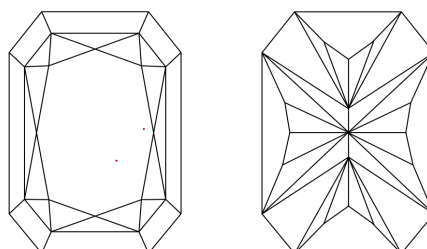
Comments: This Laboratory Grown Diamond was created by Chemical Vapor Deposition (CVD) growth process. Type IIa

PROPORTIONS



Sample Image Used

CLARITY CHARACTERISTICS



KEY TO SYMBOLS

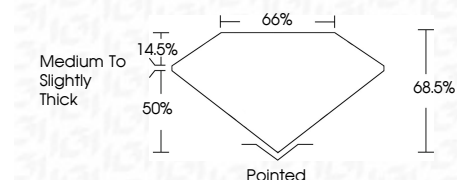
Red symbols indicate internal characteristics. Green symbols indicate external characteristics.

COLOR

D E F G H I J Faint Very Light Light

CLARITY

FL IF VVS 1-2 VS 1-2 SI 1-2 I 1-3 Flawless Internally Flawless Very Very Slightly Included Very Slightly Included Slightly Included Included



ADDITIONAL GRADING INFORMATION

Polish EXCELLENT Symmetry EXCELLENT Fluorescence NONE Inscription(s) IGI LG790633903 Comments: This Laboratory Grown Diamond was created by Chemical Vapor Deposition (CVD) growth process. Type IIa



April 8, 2026 IGI Report No LG790633903 CUT CORNERED RECT. MODIFIED BRILLIANT 3.96 CARATS E VVS 2 68.5% 65% Medium to Slightly Thick Pointed EXCELLENT EXCELLENT NONE NONE IGI LG790633903 Comments: This Laboratory Grown Diamond was created by Chemical Vapor Deposition (CVD) growth process. Type IIa