



ELECTRONIC COPY

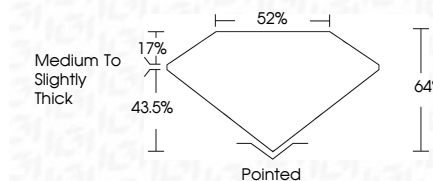
LG790633833
Report verification at igi.org



April 14, 2026
IGI Report Number **LG790633833**
Description **LABORATORY GROWN DIAMOND**
Shape and Cutting Style **KITE MODIFIED BRILLIANT**
Measurements **11.78 X 7.45 X 4.77 MM**

GRADING RESULTS

Carat Weight **2.03 CARATS**
Color Grade **E**
Clarity Grade **VS 1**



ADDITIONAL GRADING INFORMATION

Polish **EXCELLENT**
Symmetry **EXCELLENT**
Fluorescence **NONE**
Inscription(s) **IGI LG790633833**
Comments: This Laboratory Grown Diamond was created by Chemical Vapor Deposition (CVD) growth process. Type IIa



April 14, 2026
IGI Report No LG790633833
KITE MODIFIED BRILLIANT
11.78 X 7.45 X 4.77 MM
2.03 CARATS
E
VS 1
64%
52%
Medium to Slightly Thick
Pointed
EXCELLENT
EXCELLENT
NONE
IGI LG790633833
Comments: This Laboratory Grown Diamond was created by Chemical Vapor Deposition (CVD) growth process. Type IIa

LABORATORY GROWN DIAMOND REPORT

April 14, 2026
IGI Report Number **LG790633833**
Description **LABORATORY GROWN DIAMOND**
Shape and Cutting Style **KITE MODIFIED BRILLIANT**
Measurements **11.78 X 7.45 X 4.77 MM**

GRADING RESULTS

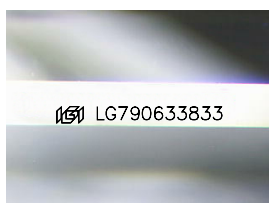
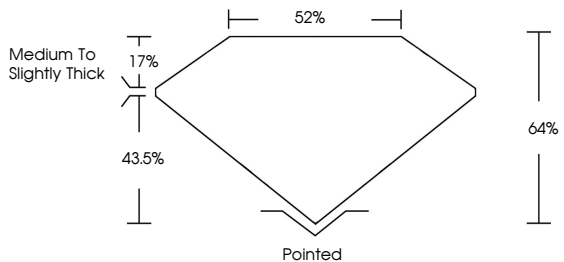
Carat Weight **2.03 CARATS**
Color Grade **E**
Clarity Grade **VS 1**

ADDITIONAL GRADING INFORMATION

Polish **EXCELLENT**
Symmetry **EXCELLENT**
Fluorescence **NONE**
Inscription(s) **IGI LG790633833**

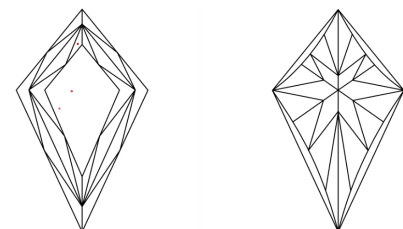
Comments: This Laboratory Grown Diamond was created by Chemical Vapor Deposition (CVD) growth process. Type IIa

PROPORTIONS



Sample Image Used

CLARITY CHARACTERISTICS



KEY TO SYMBOLS

Red symbols indicate internal characteristics.
Green symbols indicate external characteristics.

COLOR

D	E	F	G	H	I	J	Faint	Very Light	Light
---	---	---	---	---	---	---	-------	------------	-------

CLARITY

FL	IF	VS ¹⁻²	VS ¹⁻²	SI ¹⁻²	I ¹⁻³
Flawless	Internally Flawless	Very Very Slightly Included	Very Slightly Included	Slightly Included	Included

