



ELECTRONIC COPY

LG790627715
Report verification at igi.org



April 9, 2026

IGI Report Number **LG790627715**

Description **LABORATORY GROWN DIAMOND**

Shape and Cutting Style **CUT CORNERED
RECTANGULAR MODIFIED
BRILLIANT**

Measurements **8.10 X 5.68 X 3.56 MM**

GRADING RESULTS

Carat Weight **1.38 CARAT**

Color Grade **E**

Clarity Grade **VVS 2**

April 9, 2026

IGI Report Number **LG790627715**

Description **LABORATORY GROWN DIAMOND**

Shape and Cutting Style **CUT CORNERED RECTANGULAR
MODIFIED BRILLIANT**

Measurements **8.10 X 5.68 X 3.56 MM**

GRADING RESULTS

Carat Weight **1.38 CARAT**

Color Grade **E**

Clarity Grade **VVS 2**

ADDITIONAL GRADING INFORMATION

Polish **EXCELLENT**

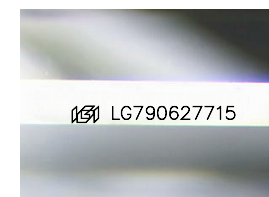
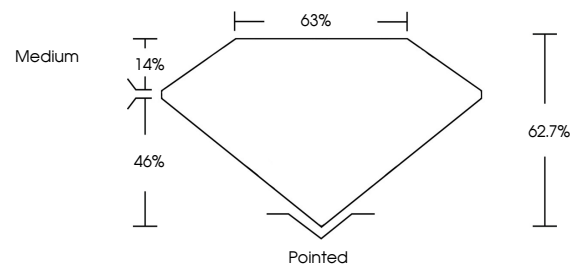
Symmetry **EXCELLENT**

Fluorescence **NONE**

Inscription(s) **IGI LG790627715**

Comments: This Laboratory Grown Diamond was created by Chemical Vapor Deposition (CVD) growth process.
Type IIa

PROPORTIONS



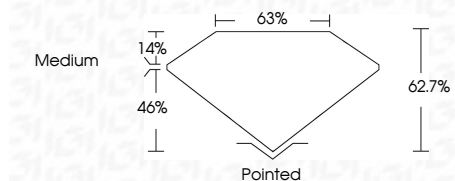
Sample Image Used

COLOR

D E F G H I J Faint Very Light Light

CLARITY

FL	IF	VVS ¹⁻²	VS ¹⁻²	SI ¹⁻²	I ¹⁻³
Flawless	Internally Flawless	Very Very Slightly Included	Very Slightly Included	Slightly Included	Included



ADDITIONAL GRADING INFORMATION

Polish **EXCELLENT**

Symmetry **EXCELLENT**

Fluorescence **NONE**

Inscription(s) **IGI LG790627715**

Comments: This Laboratory Grown Diamond was created by Chemical Vapor Deposition (CVD) growth process.
Type IIa



IGI



April 9, 2026
IGI Report No LG790627715
CUT CORNERED RECT. MODIFIED BRILLIANT
8.10 X 5.68 X 3.56 MM
Carat Weight 1.38 CARAT
Color Grade E
Clarity Grade VVS 2
Depth 62.7%
Table 63%
Girdle Medium
Culet Pointed
Polish EXCELLENT
Symmetry EXCELLENT
Fluorescence NONE
Inscription(s) IGI LG790627715
Comments: This Laboratory Grown Diamond was created by Chemical Vapor Deposition (CVD) growth process.
Type IIa