



ELECTRONIC COPY

LG790627202
Report verification at igi.org



April 13, 2026
IGI Report Number LG790627202
Description LABORATORY GROWN DIAMOND
Shape and Cutting Style OVAL BRILLIANT
Measurements 10.14 X 6.74 X 4.27 MM

GRADING RESULTS
Carat Weight 2.00 CARATS
Color Grade FANCY VIVID GREEN
Clarity Grade SI 1

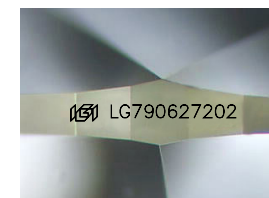
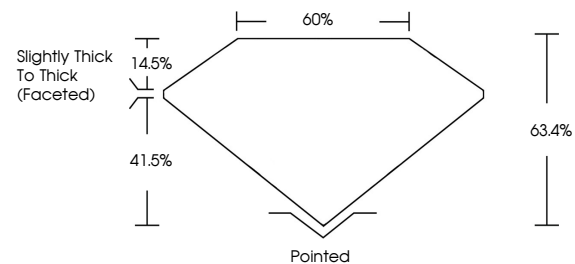
April 13, 2026
IGI Report Number LG790627202
Description LABORATORY GROWN DIAMOND
Shape and Cutting Style OVAL BRILLIANT
Measurements 10.14 X 6.74 X 4.27 MM

GRADING RESULTS
Carat Weight 2.00 CARATS
Color Grade FANCY VIVID GREEN
Clarity Grade SI 1

ADDITIONAL GRADING INFORMATION
Polish VERY GOOD
Symmetry VERY GOOD
Fluorescence NONE
Inscription(s) IGI LG790627202

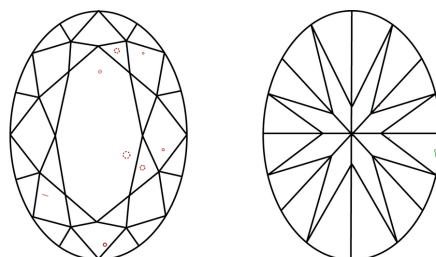
Comments: This Laboratory Grown Diamond was created by Chemical Vapor Deposition (CVD) growth process. Indications of post-growth treatment.

PROPORTIONS



Sample Image Used

CLARITY CHARACTERISTICS



KEY TO SYMBOLS

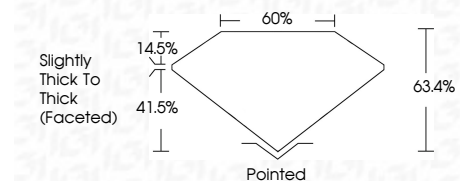
Red symbols indicate internal characteristics. Green symbols indicate external characteristics.

COLOR

D E F G H I J Faint Very Light Light

CLARITY

FL IF VS 1-2 VS 1-2 SI 1-2 I 1-3
Flawless Internally Flawless Very Very Slightly Included Very Slightly Included Slightly Included Included



ADDITIONAL GRADING INFORMATION

Polish VERY GOOD
Symmetry VERY GOOD
Fluorescence NONE
Inscription(s) IGI LG790627202
Comments: This Laboratory Grown Diamond was created by Chemical Vapor Deposition (CVD) growth process. Indications of post-growth treatment.



IGI



April 13, 2026
IGI Report No LG790627202
OVAL BRILLIANT
2.00 CARATS
FANCY VIVID GREEN
SI 1
63.4%
41.5%
Slightly Thick To Thick (Faceted)
Pointed
VERY GOOD
VERY GOOD
NONE
IGI LG790627202
Comments: This Laboratory Grown Diamond was created by Chemical Vapor Deposition (CVD) growth process. Indications of post-growth treatment.