



ELECTRONIC COPY

LG790626854 Report verification at igi.org



April 9, 2026 IGI Report Number LG790626854 Description LABORATORY GROWN DIAMOND Shape and Cutting Style MARQUISE BRILLIANT Measurements 11.15 X 5.61 X 3.49 MM GRADING RESULTS Carat Weight 1.23 CARAT Color Grade E Clarity Grade INTERNALLY FLAWLESS Cut Grade EXCELLENT

April 9, 2026 IGI Report Number LG790626854 Description LABORATORY GROWN DIAMOND Shape and Cutting Style MARQUISE BRILLIANT Measurements 11.15 X 5.61 X 3.49 MM

GRADING RESULTS

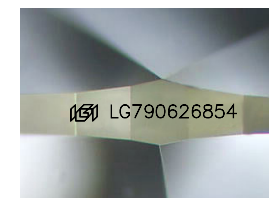
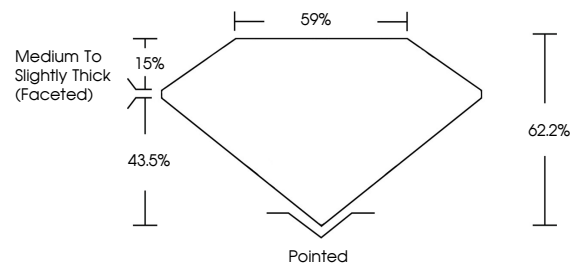
Carat Weight 1.23 CARAT Color Grade E Clarity Grade INTERNALLY FLAWLESS Cut Grade EXCELLENT

ADDITIONAL GRADING INFORMATION

Polish EXCELLENT Symmetry EXCELLENT Fluorescence NONE Inscription(s) IGI LG790626854

Comments: As Grown - No indication of post-growth treatment. This Laboratory Grown Diamond was created by High Pressure High Temperature (HPHT) growth process. Type II

PROPORTIONS



Sample Image Used

CLARITY CHARACTERISTICS



KEY TO SYMBOLS

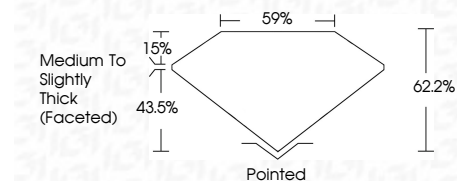
Red symbols indicate internal characteristics. Green symbols indicate external characteristics.

COLOR

D E F G H I J Faint Very Light Light

CLARITY

FL IF VS 1-2 VS 1-2 SI 1-2 I 1-3 Flawless Internally Flawless Very Very Slightly Included Very Slightly Included Slightly Included Included



ADDITIONAL GRADING INFORMATION

Polish EXCELLENT Symmetry EXCELLENT Fluorescence NONE Inscription(s) IGI LG790626854 Comments: As Grown - No indication of post-growth treatment. This Laboratory Grown Diamond was created by High Pressure High Temperature (HPHT) growth process. Type II



April 9, 2026 IGI Report No LG790626854 MARQUISE BRILLIANT 11.15 X 5.61 X 3.49 MM 1.23 CARAT E Color Grade EXCELLENT Clarity Grade EXCELLENT Depth 62.2% Table 59% Girdle Medium To Slightly Thick (Faceted) Culet Pointed Polish EXCELLENT Symmetry EXCELLENT Fluorescence NONE Inscriptions(s) IGI LG790626854 Comments: As Grown - No indication of post-growth treatment. This Laboratory Grown Diamond was created by High Pressure High Temperature (HPHT) growth process. Type II