



**INTERNATIONAL  
GEMOLOGICAL  
INSTITUTE**

**LABORATORY GROWN DIAMOND REPORT**

April 7, 2026  
 IGI Report Number **LG790626768**  
 Description **LABORATORY GROWN DIAMOND**  
 Shape and Cutting Style **OVAL BRILLIANT**  
 Measurements **7.40 X 5.02 X 3.10 MM**

**GRADING RESULTS**

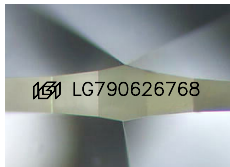
Carat Weight **0.72 CARAT**  
 Color Grade **D**  
 Clarity Grade **VVS 1**  
 Cut Grade **EXCELLENT**

**ADDITIONAL GRADING INFORMATION**

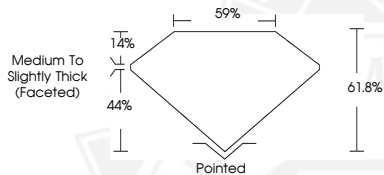
Polish **EXCELLENT**  
 Symmetry **EXCELLENT**  
 Fluorescence **NONE**  
 Inscription(s) **IGI LG790626768**

Comments: As Grown - No indication of post-growth treatment. This Laboratory Grown Diamond was created by High Pressure High Temperature (HPHT) growth process. Type II

**ELECTRONIC COPY**



Sample Image Used



April 7, 2026  
 IGI Report Number **LG790626768**  
 OVAL BRILLIANT  
 LABORATORY GROWN DIAMOND  
 7.40 X 5.02 X 3.10 MM  
 Carat Weight **0.72 CARAT**  
 Color Grade **D**  
 Clarity Grade **VVS 1**  
 Cut Grade **EXCELLENT**  
 Polish **EXCELLENT**  
 Symmetry **EXCELLENT**  
 Fluorescence **NONE**  
 Inscription(s) **IGI LG790626768**

Comments: As Grown - No indication of post-growth treatment. This Laboratory Grown Diamond was created by High Pressure High Temperature (HPHT) growth process. Type II



April 7, 2026  
 IGI Report Number **LG790626768**  
 OVAL BRILLIANT  
 LABORATORY GROWN DIAMOND  
 7.40 X 5.02 X 3.10 MM  
 Carat Weight **0.72 CARAT**  
 Color Grade **D**  
 Clarity Grade **VVS 1**  
 Cut Grade **EXCELLENT**  
 Polish **EXCELLENT**  
 Symmetry **EXCELLENT**  
 Fluorescence **NONE**  
 Inscription(s) **IGI LG790626768**

Comments: As Grown - No indication of post-growth treatment. This Laboratory Grown Diamond was created by High Pressure High Temperature (HPHT) growth process. Type II



THIS DOCUMENT WAS PRODUCED WITH THE FOLLOWING SECURITY MEASURES: SPECIAL DOCUMENT PAPER, INK SCREENS, WATERMARK, BACKGROUND DESIGNS, HOLOGRAM AND OTHER SECURITY FEATURES NOT LISTED AND DO EXCEED DOCUMENT SECURITY INDUSTRY GUIDELINES.

For terms & conditions and to verify this report, please visit [www.igi.org](http://www.igi.org)