



ELECTRONIC COPY

LG790625578
Report verification at igi.org



April 15, 2026

IGI Report Number **LG790625578**

Description **LABORATORY GROWN DIAMOND**

Shape and Cutting Style **PRINCESS CUT**

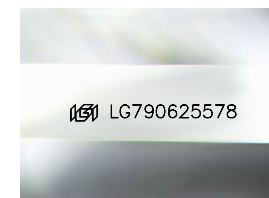
Measurements **8.06 X 7.65 X 5.23 MM**

GRADING RESULTS

Carat Weight **3.07 CARATS**

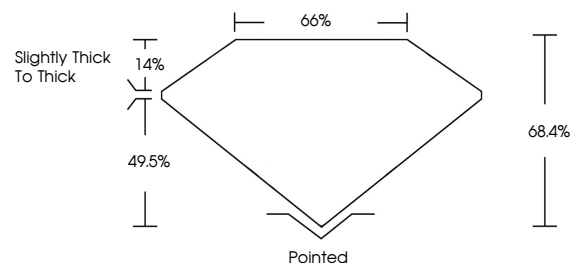
Color Grade **D**

Clarity Grade **VVS 2**

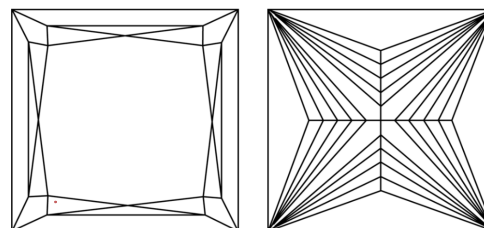


Sample Image Used

PROPORTIONS



CLARITY CHARACTERISTICS



KEY TO SYMBOLS

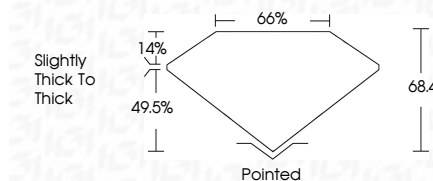
Red symbols indicate internal characteristics.
Green symbols indicate external characteristics.

COLOR

D E F G H I J Faint Very Light Light

CLARITY

FL	IF	VVS ¹⁻²	VS ¹⁻²	SI ¹⁻²	I ¹⁻³
Flawless	Internally Flawless	Very Very Slightly Included	Very Slightly Included	Slightly Included	Included



ADDITIONAL GRADING INFORMATION

Polish **EXCELLENT**

Symmetry **EXCELLENT**

Fluorescence **NONE**

Inscription(s) **IGI LG790625578**

Comments: This Laboratory Grown Diamond was created by Chemical Vapor Deposition (CVD) growth process. Type IIa



IGI



April 15, 2026
IGI Report No. LG790625578
PRINCESS CUT

8.06 X 7.65 X 5.23 MM
3.07 CARATS
D
VVS 2
68.4%
65%
Slightly Thick To Thick

Pointed
EXCELLENT
EXCELLENT
NONE
IGI LG790625578

Comments: This Laboratory Grown Diamond was created by Chemical Vapor Deposition (CVD) growth process. Type IIa