



**ELECTRONIC COPY**

LG790623466  
Report verification at igi.org



April 15, 2026

IGI Report Number **LG790623466**

Description **LABORATORY GROWN DIAMOND**

Shape and Cutting Style **ROUND BRILLIANT**

Measurements **6.84 - 6.89 X 4.14 MM**

**GRADING RESULTS**

Carat Weight **1.18 CARAT**

Color Grade **D**

Clarity Grade **VVS 2**

Cut Grade **IDEAL**

April 15, 2026

IGI Report Number **LG790623466**

Description **LABORATORY GROWN DIAMOND**

Shape and Cutting Style **ROUND BRILLIANT**

Measurements **6.84 - 6.89 X 4.14 MM**

**GRADING RESULTS**

Carat Weight **1.18 CARAT**

Color Grade **D**

Clarity Grade **VVS 2**

Cut Grade **IDEAL**

**ADDITIONAL GRADING INFORMATION**

Polish **EXCELLENT**

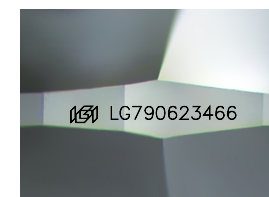
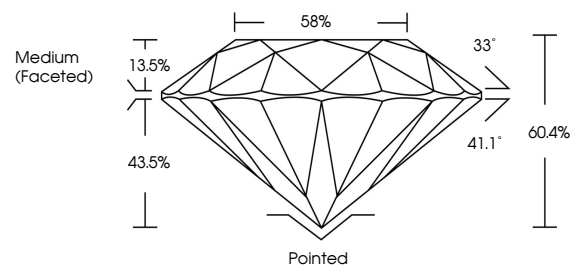
Symmetry **EXCELLENT**

Fluorescence **NONE**

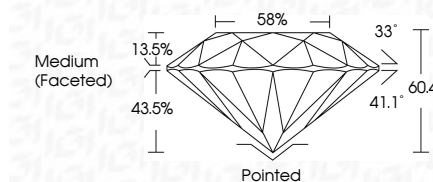
Inscription(s) **IGI LG790623466**

Comments: This Laboratory Grown Diamond was created by Chemical Vapor Deposition (CVD) growth process. Type IIa

**PROPORTIONS**



Sample Image Used



**COLOR**

D E F G H I J Faint Very Light Light

**CLARITY**

FL	IF	VVS <sup>1-2</sup>	VS <sup>1-2</sup>	SI <sup>1-2</sup>	I <sup>1-3</sup>
Flawless	Internally Flawless	Very Very Slightly Included	Very Slightly Included	Slightly Included	Included

**ADDITIONAL GRADING INFORMATION**

Polish **EXCELLENT**

Symmetry **EXCELLENT**

Fluorescence **NONE**

Inscription(s) **IGI LG790623466**

Comments: This Laboratory Grown Diamond was created by Chemical Vapor Deposition (CVD) growth process. Type IIa



**IGI**



April 15, 2026  
IGI Report No LG790623466  
ROUND BRILLIANT

6.84 - 6.89 X 4.14 MM  
1.18 CARAT  
D  
VVS 2  
IDEAL  
60.4%  
58%  
Medium (Faceted)

Pointed  
EXCELLENT  
EXCELLENT  
NONE  
IGI LG790623466

Comments: This Laboratory Grown Diamond was created by Chemical Vapor Deposition (CVD) growth process. Type IIa