



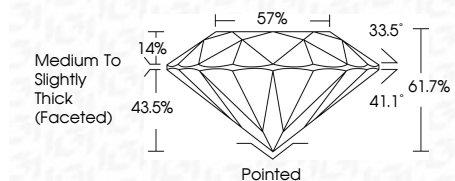
**ELECTRONIC COPY**

LG790623134  
Report verification at [igi.org](http://igi.org)



April 16, 2026  
IGI Report Number **LG790623134**  
Description **LABORATORY GROWN DIAMOND**  
Shape and Cutting Style **ROUND BRILLIANT**  
Measurements **7.22 - 7.25 X 4.47 MM**

**GRADING RESULTS**  
Carat Weight **1.44 CARAT**  
Color Grade **E**  
Clarity Grade **VS 1**  
Cut Grade **IDEAL**



**ADDITIONAL GRADING INFORMATION**  
Polish **EXCELLENT**  
Symmetry **EXCELLENT**  
Fluorescence **NONE**  
Inscription(s) **IGI LG790623134**  
Comments: This Laboratory Grown Diamond was created by Chemical Vapor Deposition (CVD) growth process. Type IIa

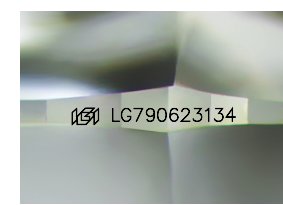
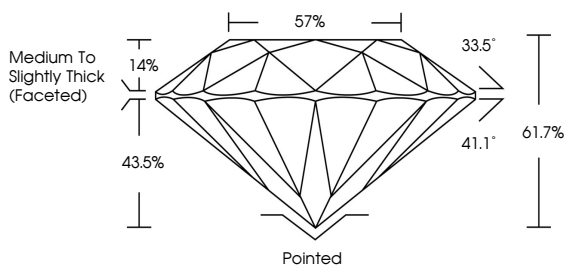


April 16, 2026  
IGI Report No LG790623134  
**ROUND BRILLIANT**  
1.44 CARAT  
**E**  
VS 1  
**IDEAL**  
61.7%  
57%  
Medium To Slightly Thick (Faceted)  
Pointed  
**EXCELLENT**  
**EXCELLENT**  
**NONE**  
IGI LG790623134  
Comments: This Laboratory Grown Diamond was created by Chemical Vapor Deposition (CVD) growth process. Type IIa

April 16, 2026  
IGI Report Number **LG790623134**  
Description **LABORATORY GROWN DIAMOND**  
Shape and Cutting Style **ROUND BRILLIANT**  
Measurements **7.22 - 7.25 X 4.47 MM**  
**GRADING RESULTS**  
Carat Weight **1.44 CARAT**  
Color Grade **E**  
Clarity Grade **VS 1**  
Cut Grade **IDEAL**

**ADDITIONAL GRADING INFORMATION**  
Polish **EXCELLENT**  
Symmetry **EXCELLENT**  
Fluorescence **NONE**  
Inscription(s) **IGI LG790623134**  
Comments: This Laboratory Grown Diamond was created by Chemical Vapor Deposition (CVD) growth process. Type IIa

**PROPORTIONS**



Sample Image Used

**COLOR**

|   |   |   |   |   |   |   |       |            |       |
|---|---|---|---|---|---|---|-------|------------|-------|
| D | E | F | G | H | I | J | Faint | Very Light | Light |
|---|---|---|---|---|---|---|-------|------------|-------|

**CLARITY**

|          |                     |                             |                        |                   |                  |
|----------|---------------------|-----------------------------|------------------------|-------------------|------------------|
| FL       | IF                  | VS <sup>1-2</sup>           | VS <sup>1-2</sup>      | SI <sup>1-2</sup> | I <sup>1-3</sup> |
| Flawless | Internally Flawless | Very Very Slightly Included | Very Slightly Included | Slightly Included | Included         |

