



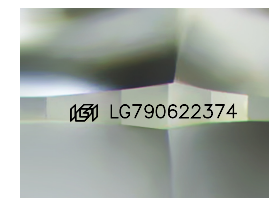
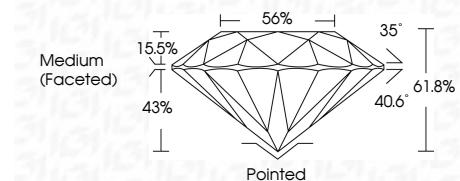
ELECTRONIC COPY

LG790622374
Report verification at igi.org



April 8, 2026
IGI Report Number **LG790622374**
Description **LABORATORY GROWN DIAMOND**
Shape and Cutting Style **ROUND BRILLIANT**
Measurements **6.40 - 6.45 X 3.97 MM**

GRADING RESULTS
Carat Weight **1.00 CARAT**
Color Grade **E**
Clarity Grade **VS 1**
Cut Grade **IDEAL**



Sample Image Used

ADDITIONAL GRADING INFORMATION
Polish **EXCELLENT**
Symmetry **EXCELLENT**
Fluorescence **NONE**
Inscription(s) **IGI LG790622374**
Comments: This Laboratory Grown Diamond was created by Chemical Vapor Deposition (CVD) growth process. Type IIa



April 8, 2026
IGI Report No LG790622374
ROUND BRILLIANT
6.40 - 6.45 X 3.97 MM
1.00 CARAT
E
VS 1
IDEAL
61.8%
56%
Medium (Faceted)
Pointed
EXCELLENT
EXCELLENT
NONE
IGI LG790622374
Comments: This Laboratory Grown Diamond was created by Chemical Vapor Deposition (CVD) growth process. Type IIa

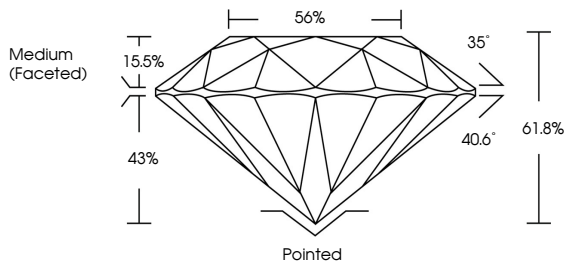
April 8, 2026
IGI Report Number **LG790622374**
Description **LABORATORY GROWN DIAMOND**
Shape and Cutting Style **ROUND BRILLIANT**
Measurements **6.40 - 6.45 X 3.97 MM**

GRADING RESULTS
Carat Weight **1.00 CARAT**
Color Grade **E**
Clarity Grade **VS 1**
Cut Grade **IDEAL**

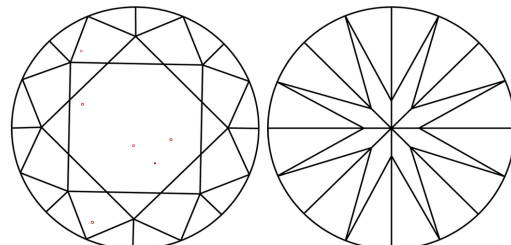
ADDITIONAL GRADING INFORMATION
Polish **EXCELLENT**
Symmetry **EXCELLENT**
Fluorescence **NONE**
Inscription(s) **IGI LG790622374**

Comments: This Laboratory Grown Diamond was created by Chemical Vapor Deposition (CVD) growth process. Type IIa

PROPORTIONS



CLARITY CHARACTERISTICS



KEY TO SYMBOLS
Red symbols indicate internal characteristics.
Green symbols indicate external characteristics.

COLOR

D	E	F	G	H	I	J	Faint	Very Light	Light
---	---	---	---	---	---	---	-------	------------	-------

CLARITY

FL	IF	VS ¹⁻²	VS ¹⁻²	SI ¹⁻²	I ¹⁻³
Flawless	Internally Flawless	Very Very Slightly Included	Very Slightly Included	Slightly Included	Included

