



ELECTRONIC COPY

LG790620567
Report verification at igi.org



April 13, 2026
IGI Report Number **LG790620567**
Description **LABORATORY GROWN DIAMOND**
Shape and Cutting Style **CUSHION MODIFIED BRILLIANT**
Measurements **12.28 X 8.36 X 5.78 MM**
GRADING RESULTS
Carat Weight **5.54 CARATS**
Color Grade **FANCY INTENSE YELLOW**
Clarity Grade **VS 2**

April 13, 2026
IGI Report Number **LG790620567**
Description **LABORATORY GROWN DIAMOND**
Shape and Cutting Style **CUSHION MODIFIED BRILLIANT**
Measurements **12.28 X 8.36 X 5.78 MM**

GRADING RESULTS

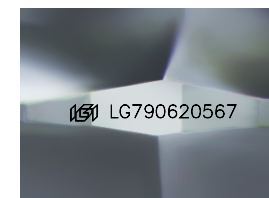
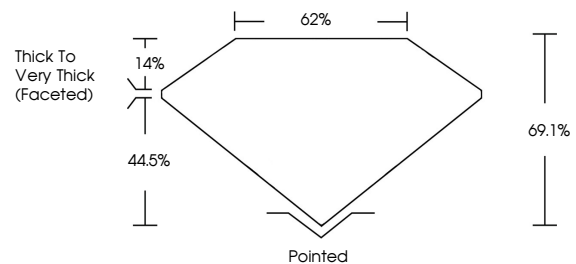
Carat Weight **5.54 CARATS**
Color Grade **FANCY INTENSE YELLOW**
Clarity Grade **VS 2**

ADDITIONAL GRADING INFORMATION

Polish **EXCELLENT**
Symmetry **EXCELLENT**
Fluorescence **NONE**
Inscription(s) **IGI LG790620567**

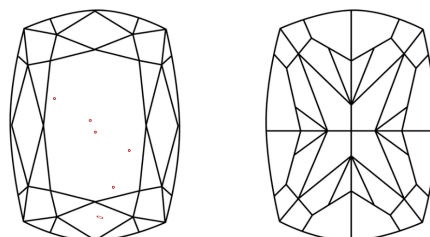
Comments: This Laboratory Grown Diamond was created by Chemical Vapor Deposition (CVD) growth process.

PROPORTIONS



Sample Image Used

CLARITY CHARACTERISTICS



KEY TO SYMBOLS

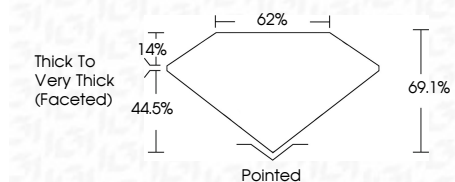
Red symbols indicate internal characteristics.
Green symbols indicate external characteristics.

COLOR

D E F G H I J Faint Very Light Light

CLARITY

FL	IF	VS ¹⁻²	VS ¹⁻²	SI ¹⁻²	I ¹⁻³
Flawless	Internally Flawless	Very Very Slightly Included	Very Slightly Included	Slightly Included	Included



ADDITIONAL GRADING INFORMATION

Polish **EXCELLENT**
Symmetry **EXCELLENT**
Fluorescence **NONE**
Inscription(s) **IGI LG790620567**
Comments: This Laboratory Grown Diamond was created by Chemical Vapor Deposition (CVD) growth process.



April 13, 2026
IGI Report No LG790620567
CUSHION MODIFIED BRILLIANT
12.28 X 8.36 X 5.78 MM
5.54 CARATS
FANCY INTENSE YELLOW
VS 2
69.1%
62%
Thick to Very Thick (Faceted)
Pointed
EXCELLENT
EXCELLENT
NONE
IGI LG790620567
Comments: This Laboratory Grown Diamond was created by Chemical Vapor Deposition (CVD) growth process.