



**ELECTRONIC COPY**

LG790620405  
Report verification at igi.org



April 8, 2026

IGI Report Number **LG790620405**

Description **LABORATORY GROWN DIAMOND**

Shape and Cutting Style **MARQUISE BRILLIANT**

Measurements **11.64 X 5.86 X 3.74 MM**

**GRADING RESULTS**

Carat Weight **1.41 CARAT**

Color Grade **D**

Clarity Grade **VS 1**

April 8, 2026

IGI Report Number **LG790620405**

Description **LABORATORY GROWN DIAMOND**

Shape and Cutting Style **MARQUISE BRILLIANT**

Measurements **11.64 X 5.86 X 3.74 MM**

**GRADING RESULTS**

Carat Weight **1.41 CARAT**

Color Grade **D**

Clarity Grade **VS 1**

**ADDITIONAL GRADING INFORMATION**

Polish **VERY GOOD**

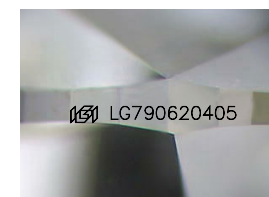
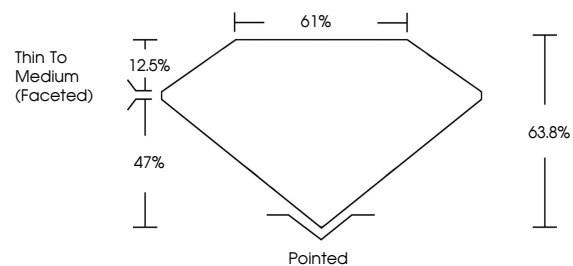
Symmetry **EXCELLENT**

Fluorescence **NONE**

Inscription(s) **IGI LG790620405**

Comments: This Laboratory Grown Diamond was created by Chemical Vapor Deposition (CVD) growth process.  
Type IIa

**PROPORTIONS**



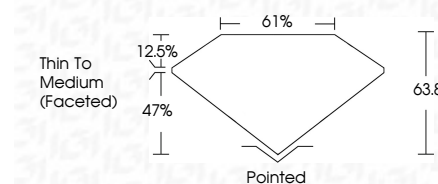
Sample Image Used

**COLOR**

D E F G H I J Faint Very Light Light

**CLARITY**

FL	IF	VS <sup>1-2</sup>	VS <sup>1-2</sup>	SI <sup>1-2</sup>	I <sup>1-3</sup>
Flawless	Internally Flawless	Very Very Slightly Included	Very Slightly Included	Slightly Included	Included



**ADDITIONAL GRADING INFORMATION**

Polish **VERY GOOD**

Symmetry **EXCELLENT**

Fluorescence **NONE**

Inscription(s) **IGI LG790620405**

Comments: This Laboratory Grown Diamond was created by Chemical Vapor Deposition (CVD) growth process.  
Type IIa



**IGI**



April 8, 2026  
IGI Report No LG790620405  
**MARQUISE BRILLIANT**  
11.64 X 5.86 X 3.74 MM  
1.41 CARAT  
Color Grade **D**  
Clarity Grade **VS 1**  
Depth **63.8%**  
Table **61%**  
Girdle  
Thin To Medium (Faceted)  
Culet  
Polish **VERY GOOD**  
Symmetry **EXCELLENT**  
Fluorescence **NONE**  
Inscription(s) **IGI LG790620405**

Comments: This Laboratory Grown Diamond was created by Chemical Vapor Deposition (CVD) growth process.  
Type IIa