



**ELECTRONIC COPY**

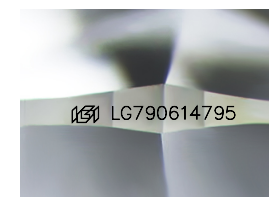
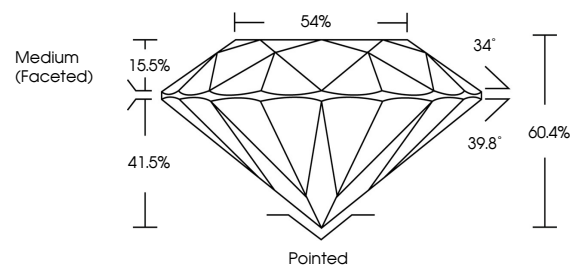
LG790614795  
Report verification at igi.org



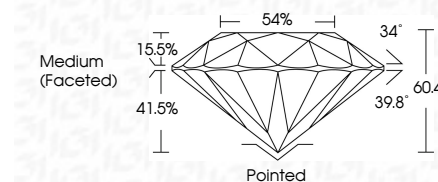
April 7, 2026  
IGI Report Number **LG790614795**  
Description **LABORATORY GROWN DIAMOND**  
Shape and Cutting Style **ROUND BRILLIANT**  
Measurements **7.18 - 7.22 X 4.36 MM**  
**GRADING RESULTS**  
Carat Weight **1.38 CARAT**  
Color Grade **G**  
Clarity Grade **VS 1**  
Cut Grade **VERY GOOD**

April 7, 2026  
IGI Report Number **LG790614795**  
Description **LABORATORY GROWN DIAMOND**  
Shape and Cutting Style **ROUND BRILLIANT**  
Measurements **7.18 - 7.22 X 4.36 MM**  
**GRADING RESULTS**  
Carat Weight **1.38 CARAT**  
Color Grade **G**  
Clarity Grade **VS 1**  
Cut Grade **VERY GOOD**

**PROPORTIONS**



Sample Image Used



**ADDITIONAL GRADING INFORMATION**

Polish **EXCELLENT**  
Symmetry **EXCELLENT**  
Fluorescence **NONE**  
Inscription(s) **IGI LG790614795**

Comments: This Laboratory Grown Diamond was created by Chemical Vapor Deposition (CVD) growth process. Type IIa

**COLOR**

D E F G H I J Faint Very Light Light

**CLARITY**

FL	IF	VS <sup>1-2</sup>	VS <sup>1-2</sup>	SI <sup>1-2</sup>	I <sup>1-3</sup>
Flawless	Internally Flawless	Very Very Slightly Included	Very Slightly Included	Slightly Included	Included

**ADDITIONAL GRADING INFORMATION**

Polish **EXCELLENT**  
Symmetry **EXCELLENT**  
Fluorescence **NONE**  
Inscription(s) **IGI LG790614795**  
Comments: This Laboratory Grown Diamond was created by Chemical Vapor Deposition (CVD) growth process. Type IIa



**IGI**



April 7, 2026  
IGI Report No **LG790614795**  
**ROUND BRILLIANT**  
Carat Weight **1.38 CARAT**  
Color Grade **G**  
Clarity Grade **VS 1**  
Cut Grade **VERY GOOD**  
Depth **60.4%**  
Table **54%**  
Girdle **Medium (Faceted)**  
Culet **Pointed**  
Polish **EXCELLENT**  
Symmetry **EXCELLENT**  
Fluorescence **NONE**  
Inscriptions(s) **IGI LG790614795**  
Comments: This Laboratory Grown Diamond was created by Chemical Vapor Deposition (CVD) growth process. Type IIa