



**ELECTRONIC COPY**

LG790612099  
Report verification at igi.org



April 8, 2026

IGI Report Number **LG790612099**

Description **LABORATORY GROWN DIAMOND**

Shape and Cutting Style **ROUND BRILLIANT**

Measurements **7.25 - 7.28 X 4.55 MM**

**GRADING RESULTS**

Carat Weight **1.48 CARAT**

Color Grade **E**

Clarity Grade **VS 1**

Cut Grade **EXCELLENT**

April 8, 2026

IGI Report Number **LG790612099**

Description **LABORATORY GROWN DIAMOND**

Shape and Cutting Style **ROUND BRILLIANT**

Measurements **7.25 - 7.28 X 4.55 MM**

**GRADING RESULTS**

Carat Weight **1.48 CARAT**

Color Grade **E**

Clarity Grade **VS 1**

Cut Grade **EXCELLENT**

**ADDITIONAL GRADING INFORMATION**

Polish **EXCELLENT**

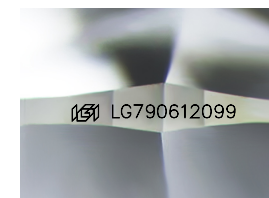
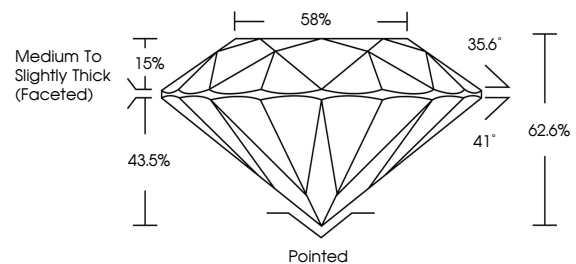
Symmetry **EXCELLENT**

Fluorescence **NONE**

Inscription(s) **LG790612099**

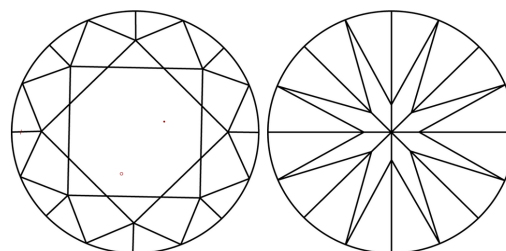
Comments: This Laboratory Grown Diamond was created by Chemical Vapor Deposition (CVD) growth process.  
Type IIa

**PROPORTIONS**



Sample Image Used

**CLARITY CHARACTERISTICS**



**KEY TO SYMBOLS**

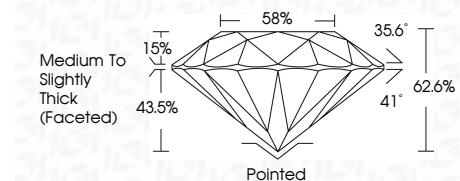
Red symbols indicate internal characteristics.  
Green symbols indicate external characteristics.

**COLOR**

D E F G H I J Faint Very Light Light

**CLARITY**

FL	IF	VS <sup>1-2</sup>	VS <sup>1-2</sup>	SI <sup>1-2</sup>	I <sup>1-3</sup>
Flawless	Internally Flawless	Very Very Slightly Included	Very Slightly Included	Slightly Included	Included



**ADDITIONAL GRADING INFORMATION**

Polish **EXCELLENT**

Symmetry **EXCELLENT**

Fluorescence **NONE**

Inscription(s) **LG790612099**

Comments: This Laboratory Grown Diamond was created by Chemical Vapor Deposition (CVD) growth process.  
Type IIa



**IGI**



April 8, 2026  
IGI Report No LG790612099  
ROUND BRILLIANT

7.25 - 7.28 X 4.55 MM

1.48 CARAT  
E

Color Grade  
EXCELLENT

Clarity Grade  
VS 1

Depth  
62.6%

Table  
58%

Girdle  
Medium To Slightly Thick (Faceted)

Culet  
Pointed

Polish  
EXCELLENT

Symmetry  
EXCELLENT

Fluorescence  
NONE

Inscription(s)  
IGI LG790612099

Comments: This Laboratory Grown Diamond was created by Chemical Vapor Deposition (CVD) growth process.  
Type IIa