



**INTERNATIONAL  
GEMOLOGICAL  
INSTITUTE**

**LABORATORY GROWN DIAMOND REPORT**

May 11, 2026  
 IGI Report Number **LG790612046**  
 Description **LABORATORY GROWN DIAMOND**  
 Shape and Cutting Style **MARQUISE BRILLIANT**  
 Measurements **10.38 X 5.12 X 3.22 MM**

**GRADING RESULTS**

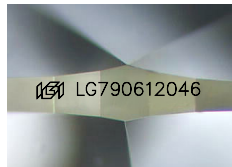
Carat Weight **0.96 CARAT**  
 Color Grade **D**  
 Clarity Grade **INTERNALLY FLAWLESS**  
 Cut Grade **EXCELLENT**

**ADDITIONAL GRADING INFORMATION**

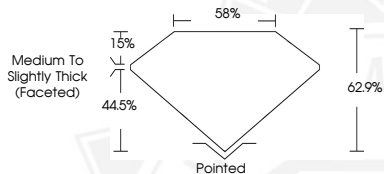
Polish **EXCELLENT**  
 Symmetry **EXCELLENT**  
 Fluorescence **NONE**  
 Inscription(s) **IGI LG790612046**

Comments: As Grown - No indication of post-growth treatment. This Laboratory Grown Diamond was created by High Pressure High Temperature (HPHT) growth process. Type II

**ELECTRONIC COPY**



Sample Image Used



May 11, 2026

IGI Report Number **LG790612046**  
**MARQUISE BRILLIANT**  
**LABORATORY GROWN DIAMOND**  
**10.38 X 5.12 X 3.22 MM**  
 Carat Weight **0.96 CARAT**  
 Color Grade **D**  
 Clarity Grade **I.F.**  
 Cut Grade **EXCELLENT**  
 Polish **EXCELLENT**  
 Symmetry **EXCELLENT**  
 Fluorescence **NONE**  
 Inscription(s) **IGI LG790612046**

Comments: As Grown - No indication of post-growth treatment. This Laboratory Grown Diamond was created by High Pressure High Temperature (HPHT) growth process. Type II



May 11, 2026

IGI Report Number **LG790612046**  
**MARQUISE BRILLIANT**  
**LABORATORY GROWN DIAMOND**  
**10.38 X 5.12 X 3.22 MM**  
 Carat Weight **0.96 CARAT**  
 Color Grade **D**  
 Clarity Grade **I.F.**  
 Cut Grade **EXCELLENT**  
 Polish **EXCELLENT**  
 Symmetry **EXCELLENT**  
 Fluorescence **NONE**  
 Inscription(s) **IGI LG790612046**

Comments: As Grown - No indication of post-growth treatment. This Laboratory Grown Diamond was created by High Pressure High Temperature (HPHT) growth process. Type II



THIS DOCUMENT WAS PRODUCED WITH THE FOLLOWING SECURITY MEASURES: SPECIAL DOCUMENT PAPER, INK SCREENS, WATERMARK, BACKGROUND DESIGNS, HOLOGRAM AND OTHER SECURITY FEATURES NOT LISTED AND DO EXCEED DOCUMENT SECURITY INDUSTRY GUIDELINES.

For terms & conditions and to verify this report, please visit [www.igi.org](http://www.igi.org)