



LABORATORY GROWN DIAMOND REPORT

April 30, 2026
 IGI Report Number **LG790611842**
 Description **LABORATORY GROWN DIAMOND**
 Shape and Cutting Style **OVAL MIXED CUT**
 Measurements **6.56 X 4.36 X 3.00 MM**

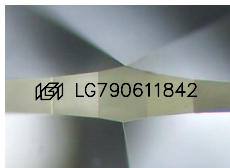
GRADING RESULTS

Carat Weight **0.67 CARAT**
 Color Grade **FANCY VIVID GREEN**
 Clarity Grade **VVS 2**

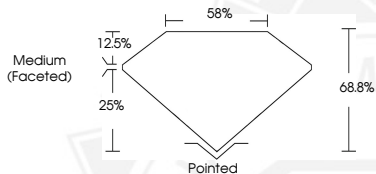
ADDITIONAL GRADING INFORMATION

Polish **EXCELLENT**
 Symmetry **EXCELLENT**
 Fluorescence **SLIGHT**
 Inscription(s) **IGI LG790611842**

Comments: This Laboratory Grown Diamond was created by High Pressure High Temperature (HPHT) growth process. Indications of post-growth treatment.



Sample Image Used



April 30, 2026
 IGI Report Number **LG790611842**
 OVAL MIXED CUT
 LABORATORY GROWN DIAMOND
6.56 X 4.36 X 3.00 MM
 Carat Weight **0.67 CARAT**
 Color Grade **FANCY VIVID GREEN**
 Clarity Grade **VVS 2**
 Polish **EXCELLENT**
 Symmetry **EXCELLENT**
 Fluorescence **SLIGHT**
 Inscription(s) **IGI LG790611842**

Comments: This Laboratory Grown Diamond was created by High Pressure High Temperature (HPHT) growth process. Indications of post-growth treatment.



April 30, 2026
 IGI Report Number **LG790611842**
 OVAL MIXED CUT
 LABORATORY GROWN DIAMOND
6.56 X 4.36 X 3.00 MM
 Carat Weight **0.67 CARAT**
 Color Grade **FANCY VIVID GREEN**
 Clarity Grade **VVS 2**
 Polish **EXCELLENT**
 Symmetry **EXCELLENT**
 Fluorescence **SLIGHT**
 Inscription(s) **IGI LG790611842**

Comments: This Laboratory Grown Diamond was created by High Pressure High Temperature (HPHT) growth process. Indications of post-growth treatment.



THIS DOCUMENT WAS PRODUCED WITH THE FOLLOWING SECURITY MEASURES: SPECIAL DOCUMENT PAPER, INK SCREENS, WATERMARK, BACKGROUND DESIGNS, HOLOGRAM AND OTHER SECURITY FEATURES NOT LISTED AND DO EXCEED DOCUMENT SECURITY INDUSTRY GUIDELINES.