



ELECTRONIC COPY

LG790611601
Report verification at igi.org



April 16, 2026

IGI Report Number LG790611601

Description LABORATORY GROWN DIAMOND

Shape and Cutting Style ROUND BRILLIANT

Measurements 9.78 - 9.81 X 6.06 MM

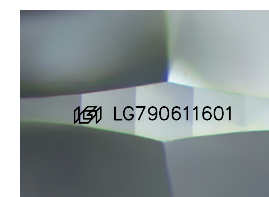
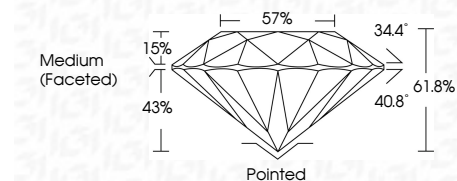
GRADING RESULTS

Carat Weight 3.59 CARATS

Color Grade D

Clarity Grade INTERNALLY FLAWLESS

Cut Grade IDEAL



Sample Image Used

ADDITIONAL GRADING INFORMATION

Polish EXCELLENT

Symmetry EXCELLENT

Fluorescence NONE

Inscription(s) LG790611601

Comments: HEARTS & ARROWS
As Grown - No indication of post-growth treatment.
This Laboratory Grown Diamond was created by High Pressure High Temperature (HPHT) growth process.
Type II



Summary table with columns: April 16, 2026, IGI Report No LG790611601, ROUND BRILLIANT, 9.78 - 9.81 X 6.06 MM, 3.59 CARATS, D, IF, IDEAL, 61.8%, 57%, Medium (Faceted), Pointed, EXCELLENT, EXCELLENT, NONE, LG790611601

April 16, 2026
IGI Report Number LG790611601
Description LABORATORY GROWN DIAMOND
Shape and Cutting Style ROUND BRILLIANT
Measurements 9.78 - 9.81 X 6.06 MM

GRADING RESULTS

Carat Weight 3.59 CARATS

Color Grade D

Clarity Grade INTERNALLY FLAWLESS

Cut Grade IDEAL

ADDITIONAL GRADING INFORMATION

Polish EXCELLENT

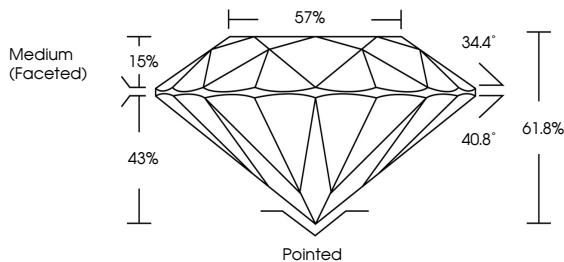
Symmetry EXCELLENT

Fluorescence NONE

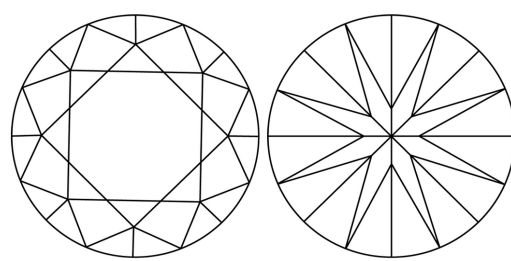
Inscription(s) LG790611601

Comments: HEARTS & ARROWS
As Grown - No indication of post-growth treatment.
This Laboratory Grown Diamond was created by High Pressure High Temperature (HPHT) growth process.
Type II

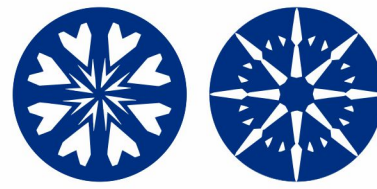
PROPORTIONS



CLARITY CHARACTERISTICS



KEY TO SYMBOLS
Red symbols indicate internal characteristics.
Green symbols indicate external characteristics.



COLOR

Color scale table: D, E, F, G, H, I, J, Faint, Very Light, Light

CLARITY

Clarity scale table: FL, IF, VS 1-2, VS 1-2, SI 1-2, I 1-3, Flawless, Internally Flawless, Very Very Slightly Included, Very Slightly Included, Slightly Included, Included

