



ELECTRONIC COPY

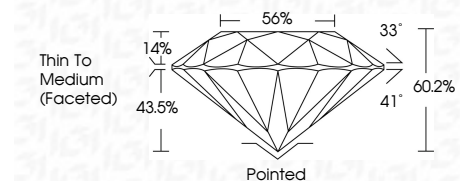
LG790611597
Report verification at igi.org



April 16, 2026
IGI Report Number LG790611597
Description LABORATORY GROWN DIAMOND
Shape and Cutting Style ROUND BRILLIANT
Measurements 9.00 - 9.06 X 5.43 MM

GRADING RESULTS

Carat Weight 2.64 CARATS
Color Grade D
Clarity Grade FLAWLESS
Cut Grade IDEAL

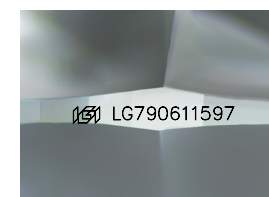


ADDITIONAL GRADING INFORMATION

Polish EXCELLENT
Symmetry EXCELLENT
Fluorescence NONE
Inscription(s) LG790611597
Comments: HEARTS & ARROWS
As Grown - No indication of post-growth treatment.
This Laboratory Grown Diamond was created by High Pressure High Temperature (HPHT) growth process.
Type II

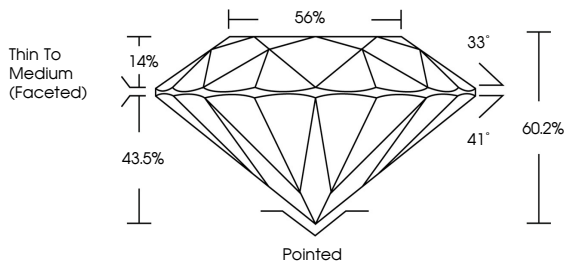


April 16, 2026
IGI Report No LG790611597
ROUND BRILLIANT
2.64 CARATS D
FLAWLESS IDEAL
9.00 - 9.06 X 5.43 MM 60.2% 56%
Color Grade D
Clarity Grade FLAWLESS
Depth 60.2%
Table 56%
Girdle Thin To Medium (Faceted)
Culet Pointed
Polish EXCELLENT
Symmetry EXCELLENT
Fluorescence NONE
Inscriptions(s) LG790611597
Comments: HEARTS & ARROWS
As Grown - No indication of post-growth treatment.
This Laboratory Grown Diamond was created by High Pressure High Temperature (HPHT) growth process.
Type II

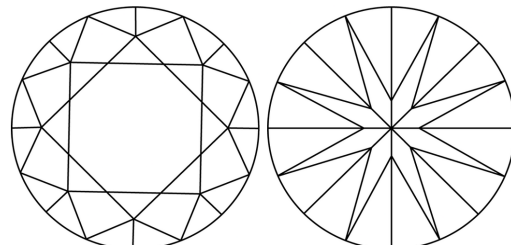


Sample Image Used

PROPORTIONS



CLARITY CHARACTERISTICS



KEY TO SYMBOLS

Red symbols indicate internal characteristics.
Green symbols indicate external characteristics.



COLOR

Color scale table with D, E, F, G, H, I, J, Faint, Very Light, Light

CLARITY

Clarity scale table with FL, IF, VS 1-2, VS 1-2, SI 1-2, I 1-3



April 16, 2026
IGI Report Number LG790611597
Description LABORATORY GROWN DIAMOND
Shape and Cutting Style ROUND BRILLIANT
Measurements 9.00 - 9.06 X 5.43 MM

GRADING RESULTS

Carat Weight 2.64 CARATS
Color Grade D
Clarity Grade FLAWLESS
Cut Grade IDEAL

ADDITIONAL GRADING INFORMATION

Polish EXCELLENT
Symmetry EXCELLENT
Fluorescence NONE
Inscription(s) LG790611597

Comments: HEARTS & ARROWS
As Grown - No indication of post-growth treatment.
This Laboratory Grown Diamond was created by High Pressure High Temperature (HPHT) growth process.
Type II