



LABORATORY GROWN DIAMOND REPORT

April 21, 2026
 IGI Report Number **LG790608672**
 Description **LABORATORY GROWN DIAMOND**
 Shape and Cutting Style **OVAL MODIFIED BRILLIANT**
 Measurements **6.89 X 4.25 X 2.74 MM**

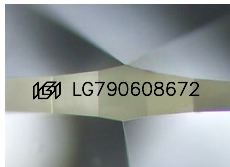
GRADING RESULTS

Carat Weight **0.52 CARAT**
 Color Grade **D**
 Clarity Grade **VS 2**

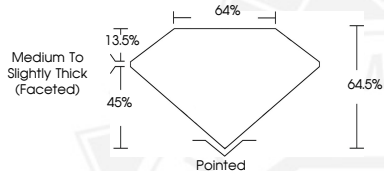
ADDITIONAL GRADING INFORMATION

Polish **EXCELLENT**
 Symmetry **VERY GOOD**
 Fluorescence **NONE**
 Inscription(s) **IGI LG790608672**

Comments: As Grown - No indication of post-growth treatment.
 This Laboratory Grown Diamond was created by High Pressure High Temperature (HPHT) growth process.
 Type II



Sample Image Used



April 21, 2026
 IGI Report Number **LG790608672**
 OVAL MODIFIED BRILLIANT
 LABORATORY GROWN DIAMOND
6.89 X 4.25 X 2.74 MM
 Carat Weight **0.52 CARAT**
 Color Grade **D**
 Clarity Grade **VS 2**
 Polish **EXCELLENT**
 Symmetry **VERY GOOD**
 Fluorescence **NONE**
 Inscription(s) **IGI LG790608672**

Comments: As Grown - No indication of post-growth treatment. This Laboratory Grown Diamond was created by High Pressure High Temperature (HPHT) growth process. Type II



April 21, 2026
 IGI Report Number **LG790608672**
 OVAL MODIFIED BRILLIANT
 LABORATORY GROWN DIAMOND
6.89 X 4.25 X 2.74 MM
 Carat Weight **0.52 CARAT**
 Color Grade **D**
 Clarity Grade **VS 2**
 Polish **EXCELLENT**
 Symmetry **VERY GOOD**
 Fluorescence **NONE**
 Inscription(s) **IGI LG790608672**

Comments: As Grown - No indication of post-growth treatment. This Laboratory Grown Diamond was created by High Pressure High Temperature (HPHT) growth process. Type II



THIS DOCUMENT WAS PRODUCED WITH THE FOLLOWING SECURITY MEASURES: SPECIAL DOCUMENT PAPER, INK SCREENS, WATERMARK, BACKGROUND DESIGNS, HOLOGRAM AND OTHER SECURITY FEATURES NOT LISTED AND DO EXCEED DOCUMENT SECURITY INDUSTRY GUIDELINES.