



**ELECTRONIC COPY**

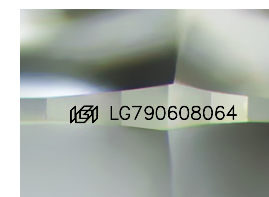
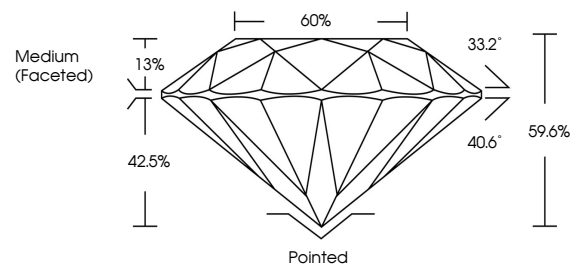
LG790608064  
Report verification at [igi.org](http://igi.org)



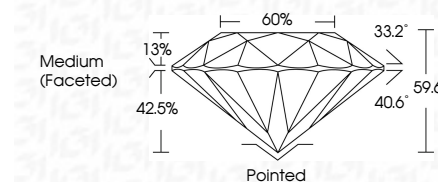
April 28, 2026  
IGI Report Number **LG790608064**  
Description **LABORATORY GROWN DIAMOND**  
Shape and Cutting Style **ROUND BRILLIANT**  
Measurements **7.47 - 7.51 X 4.46 MM**  
**GRADING RESULTS**  
Carat Weight **1.54 CARAT**  
Color Grade **FANCY INTENSE BLUE**  
Clarity Grade **VVS 2**  
Cut Grade **IDEAL**

April 28, 2026  
IGI Report Number **LG790608064**  
Description **LABORATORY GROWN DIAMOND**  
Shape and Cutting Style **ROUND BRILLIANT**  
Measurements **7.47 - 7.51 X 4.46 MM**  
**GRADING RESULTS**  
Carat Weight **1.54 CARAT**  
Color Grade **FANCY INTENSE BLUE**  
Clarity Grade **VVS 2**  
Cut Grade **IDEAL**

**PROPORTIONS**



Sample Image Used



**ADDITIONAL GRADING INFORMATION**

Polish **EXCELLENT**  
Symmetry **EXCELLENT**  
Fluorescence **NONE**  
Inscription(s) **IGI LG790608064**

Comments: This Laboratory Grown Diamond was created by High Pressure High Temperature (HPHT) growth process. Indications of post-growth treatment.

**COLOR**

D E F G H I J Faint Very Light Light

**CLARITY**

FL	IF	VVS <sup>1-2</sup>	VS <sup>1-2</sup>	SI <sup>1-2</sup>	I <sup>1-3</sup>
Flawless	Internally Flawless	Very Very Slightly Included	Very Slightly Included	Slightly Included	Included

**ADDITIONAL GRADING INFORMATION**

Polish **EXCELLENT**  
Symmetry **EXCELLENT**  
Fluorescence **NONE**  
Inscription(s) **IGI LG790608064**  
Comments: This Laboratory Grown Diamond was created by High Pressure High Temperature (HPHT) growth process. Indications of post-growth treatment.



**IGI**



April 28, 2026  
IGI Report No **LG790608064**  
**ROUND BRILLIANT**  
**7.47 - 7.51 X 4.46 MM**  
Carat Weight **1.54 CARAT**  
Color Grade **FANCY INTENSE BLUE**  
Clarity Grade **VVS 2**  
Depth **IDEAL**  
Table **59.6%**  
Girdle **60%**  
Medium (Faceted)  
Culet **Pointed**  
Polish **EXCELLENT**  
Symmetry **EXCELLENT**  
Fluorescence **NONE**  
Inscriptions(s) **IGI LG790608064**  
Comments: This Laboratory Grown Diamond was created by High Pressure High Temperature (HPHT) growth process. Indications of post-growth treatment.