



**ELECTRONIC COPY**

LG790608051  
Report verification at [igi.org](http://igi.org)

**LABORATORY GROWN DIAMOND REPORT**

April 28, 2026  
IGI Report Number **LG790608051**

Description **LABORATORY GROWN DIAMOND**

Shape and Cutting Style **CUT CORNERED RECTANGULAR  
MODIFIED BRILLIANT**

Measurements **7.85 X 5.66 X 4.04 MM**

**GRADING RESULTS**

Carat Weight **1.55 CARAT**

Color Grade **FANCY VIVID BLUE**

Clarity Grade **VVS 2**

**ADDITIONAL GRADING INFORMATION**

Polish **EXCELLENT**

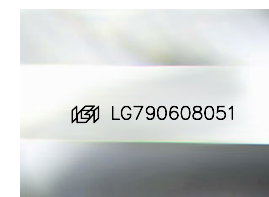
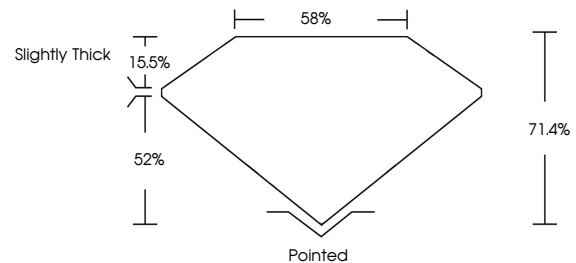
Symmetry **EXCELLENT**

Fluorescence **NONE**

Inscription(s) **IGI LG790608051**

Comments: This Laboratory Grown Diamond was created by High Pressure High Temperature (HPHT) growth process. Indications of post-growth treatment.

**PROPORTIONS**



Sample Image Used

**COLOR**

D E F G H I J Faint Very Light Light

**CLARITY**

FL	IF	VVS <sup>1-2</sup>	VS <sup>1-2</sup>	SI <sup>1-2</sup>	I <sup>1-3</sup>
Flawless	Internally Flawless	Very Very Slightly Included	Very Slightly Included	Slightly Included	Included



April 28, 2026

IGI Report Number **LG790608051**

Description **LABORATORY GROWN DIAMOND**

Shape and Cutting Style **CUT CORNERED  
RECTANGULAR MODIFIED  
BRILLIANT**

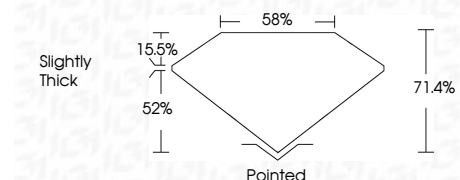
Measurements **7.85 X 5.66 X 4.04 MM**

**GRADING RESULTS**

Carat Weight **1.55 CARAT**

Color Grade **FANCY VIVID BLUE**

Clarity Grade **VVS 2**



**ADDITIONAL GRADING INFORMATION**

Polish **EXCELLENT**

Symmetry **EXCELLENT**

Fluorescence **NONE**

Inscription(s) **IGI LG790608051**

Comments: This Laboratory Grown Diamond was created by High Pressure High Temperature (HPHT) growth process. Indications of post-growth treatment.



**IGI**



April 28, 2026  
IGI Report No. LG790608051  
CUT CORNERED RECT. MODIFIED BRILLIANT  
7.85 X 5.66 X 4.04 MM  
1.55 CARAT  
FANCY VIVID BLUE  
VVS 2  
71.4%  
85%  
Slightly Thick  
Pointed  
EXCELLENT  
EXCELLENT  
NONE  
IGI LG790608051  
Comments: This Laboratory Grown Diamond was created by High Pressure High Temperature (HPHT) growth process. Indications of post-growth treatment.