



LABORATORY GROWN DIAMOND REPORT

April 24, 2026
 IGI Report Number **LG790607877**
 Description **LABORATORY GROWN DIAMOND**
 Shape and Cutting Style **HEART BRILLIANT**
 Measurements **6.15 X 6.96 X 3.70 MM**

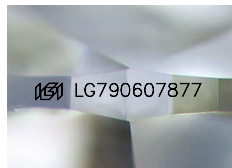
GRADING RESULTS

Carat Weight **0.92 CARAT**
 Color Grade **F**
 Clarity Grade **VVS 1**

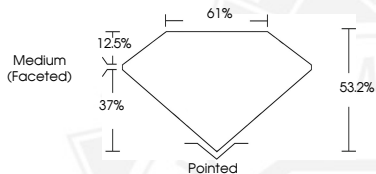
ADDITIONAL GRADING INFORMATION

Polish **EXCELLENT**
 Symmetry **VERY GOOD**
 Fluorescence **NONE**
 Inscription(s) **IGI LG790607877**

Comments: As Grown - No indication of post-growth treatment. This Laboratory Grown Diamond was created by High Pressure High Temperature (HPHT) growth process. Type II



Sample Image Used



April 24, 2026
 IGI Report Number **LG790607877**
HEART BRILLIANT
LABORATORY GROWN DIAMOND
6.15 X 6.96 X 3.70 MM
 Carat Weight **0.92 CARAT**
 Color Grade **F**
 Clarity Grade **VVS 1**
 Polish **EXCELLENT**
 Symmetry **VERY GOOD**
 Fluorescence **NONE**
 Inscription(s) **IGI LG790607877**

Comments: As Grown - No indication of post-growth treatment. This Laboratory Grown Diamond was created by High Pressure High Temperature (HPHT) growth process. Type II



April 24, 2026
 IGI Report Number **LG790607877**
HEART BRILLIANT
LABORATORY GROWN DIAMOND
6.15 X 6.96 X 3.70 MM
 Carat Weight **0.92 CARAT**
 Color Grade **F**
 Clarity Grade **VVS 1**
 Polish **EXCELLENT**
 Symmetry **VERY GOOD**
 Fluorescence **NONE**
 Inscription(s) **IGI LG790607877**

Comments: As Grown - No indication of post-growth treatment. This Laboratory Grown Diamond was created by High Pressure High Temperature (HPHT) growth process. Type II



THIS DOCUMENT WAS PRODUCED WITH THE FOLLOWING SECURITY MEASURES: SPECIAL DOCUMENT PAPER, INK SCREENS, WATERMARK, BACKGROUND DESIGNS, HOLOGRAM AND OTHER SECURITY FEATURES NOT LISTED AND DO EXCEED DOCUMENT SECURITY INDUSTRY GUIDELINES.