



LABORATORY GROWN DIAMOND REPORT

April 17, 2026
 IGI Report Number **LG790607775**
 Description **LABORATORY GROWN DIAMOND**
 Shape and Cutting Style **ROUND BRILLIANT**
 Measurements **5.57 - 5.59 X 3.44 MM**

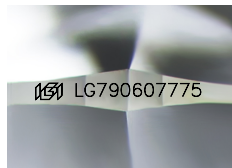
GRADING RESULTS

Carat Weight **0.65 CARAT**
 Color Grade **D**
 Clarity Grade **INTERNALLY FLAWLESS**
 Cut Grade **IDEAL**

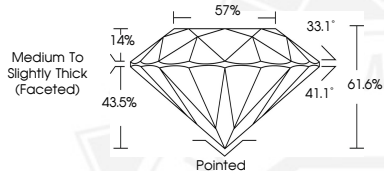
ADDITIONAL GRADING INFORMATION

Polish **EXCELLENT**
 Symmetry **EXCELLENT**
 Fluorescence **NONE**
 Inscription(s) **IGI LG790607775**

Comments: As Grown - No indication of post-growth treatment.
 This Laboratory Grown Diamond was created by High Pressure High
 Temperature (HPHT) growth process.
 Type II



Sample Image Used



April 17, 2026
 IGI Report Number **LG790607775**
ROUND BRILLIANT
LABORATORY GROWN DIAMOND
5.57 - 5.59 X 3.44 MM
 Carat Weight **0.65 CARAT**
 Color Grade **D**
 Clarity Grade **I.F.**
 Cut Grade **IDEAL**
 Polish **EXCELLENT**
 Symmetry **EXCELLENT**
 Fluorescence **NONE**
 Inscription(s) **IGI LG790607775**

Comments: As Grown - No indication of post-growth treatment. This Laboratory Grown Diamond was created by High Pressure High Temperature (HPHT) growth process. Type II



April 17, 2026
 IGI Report Number **LG790607775**
ROUND BRILLIANT
LABORATORY GROWN DIAMOND
5.57 - 5.59 X 3.44 MM
 Carat Weight **0.65 CARAT**
 Color Grade **D**
 Clarity Grade **I.F.**
 Cut Grade **IDEAL**
 Polish **EXCELLENT**
 Symmetry **EXCELLENT**
 Fluorescence **NONE**
 Inscription(s) **IGI LG790607775**

Comments: As Grown - No indication of post-growth treatment. This Laboratory Grown Diamond was created by High Pressure High Temperature (HPHT) growth process. Type II



THIS DOCUMENT WAS PRODUCED WITH THE FOLLOWING SECURITY MEASURES: SPECIAL DOCUMENT PAPER, INK SCREENS, WATERMARK, BACKGROUND DESIGNS, HOLOGRAM AND OTHER SECURITY FEATURES NOT LISTED AND DO EXCEED DOCUMENT SECURITY INDUSTRY GUIDELINES.