



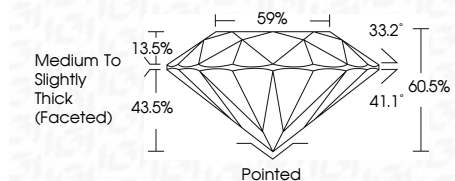
**ELECTRONIC COPY**

LG790607619  
Report verification at igi.org



April 22, 2026  
IGI Report Number **LG790607619**  
Description **LABORATORY GROWN DIAMOND**  
Shape and Cutting Style **ROUND BRILLIANT**  
Measurements **8.21 - 8.23 X 4.97 MM**

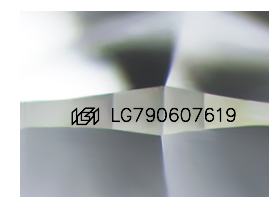
**GRADING RESULTS**  
Carat Weight **2.04 CARATS**  
Color Grade **D**  
Clarity Grade **VS 1**  
Cut Grade **IDEAL**



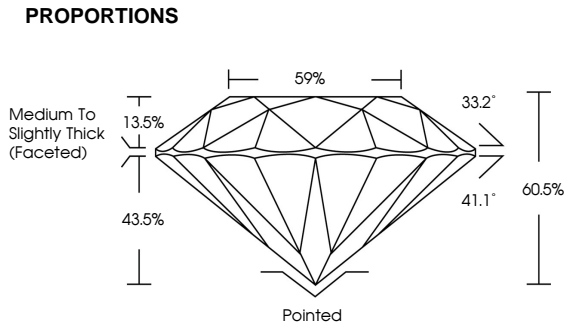
**ADDITIONAL GRADING INFORMATION**  
Polish **EXCELLENT**  
Symmetry **EXCELLENT**  
Fluorescence **NONE**  
Inscription(s) **IGI LG790607619**  
Comments: This Laboratory Grown Diamond was created by Chemical Vapor Deposition (CVD) growth process. Type IIa



April 22, 2026  
IGI Report No LG790607619  
**ROUND BRILLIANT**  
8.21 - 8.23 X 4.97 MM  
2.04 CARATS  
Color Grade **D**  
Clarity Grade **VS 1**  
Depth **60.5%**  
Table **13.5%**  
Girdle **43.5%**  
Medium To Slightly Thick (Faceted)  
Culet **Pointed**  
Polish **EXCELLENT**  
Symmetry **EXCELLENT**  
Fluorescence **NONE**  
Inscription(s) **IGI LG790607619**  
Comments: This Laboratory Grown Diamond was created by Chemical Vapor Deposition (CVD) growth process. Type IIa



Sample Image Used



**COLOR**

D	E	F	G	H	I	J	Faint	Very Light	Light
---	---	---	---	---	---	---	-------	------------	-------

**CLARITY**

FL	IF	VS <sup>1-2</sup>	VS <sup>1-2</sup>	SI <sup>1-2</sup>	I <sup>1-3</sup>
Flawless	Internally Flawless	Very Very Slightly Included	Very Slightly Included	Slightly Included	Included



April 22, 2026  
IGI Report Number **LG790607619**  
Description **LABORATORY GROWN DIAMOND**  
Shape and Cutting Style **ROUND BRILLIANT**  
Measurements **8.21 - 8.23 X 4.97 MM**  
**GRADING RESULTS**  
Carat Weight **2.04 CARATS**  
Color Grade **D**  
Clarity Grade **VS 1**  
Cut Grade **IDEAL**  
**ADDITIONAL GRADING INFORMATION**  
Polish **EXCELLENT**  
Symmetry **EXCELLENT**  
Fluorescence **NONE**  
Inscription(s) **IGI LG790607619**  
Comments: This Laboratory Grown Diamond was created by Chemical Vapor Deposition (CVD) growth process. Type IIa