



ELECTRONIC COPY

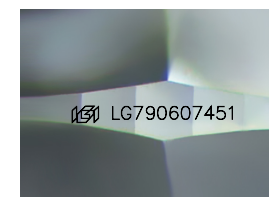
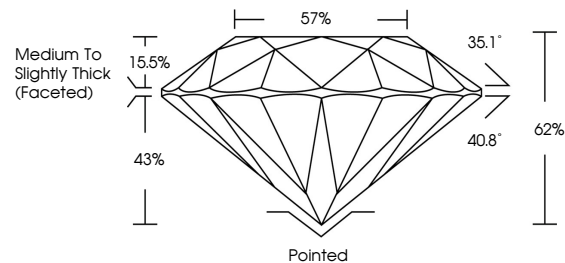
LG790607451
Report verification at igi.org



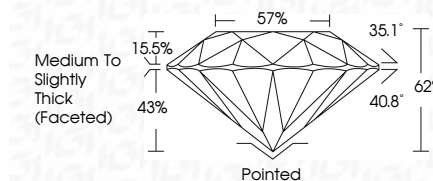
April 22, 2026
IGI Report Number **LG790607451**
Description **LABORATORY GROWN DIAMOND**
Shape and Cutting Style **ROUND BRILLIANT**
Measurements **6.47 - 6.50 X 4.02 MM**
GRADING RESULTS
Carat Weight **1.04 CARAT**
Color Grade **D**
Clarity Grade **INTERNALLY FLAWLESS**
Cut Grade **IDEAL**

April 22, 2026
IGI Report Number **LG790607451**
Description **LABORATORY GROWN DIAMOND**
Shape and Cutting Style **ROUND BRILLIANT**
Measurements **6.47 - 6.50 X 4.02 MM**
GRADING RESULTS
Carat Weight **1.04 CARAT**
Color Grade **D**
Clarity Grade **INTERNALLY FLAWLESS**
Cut Grade **IDEAL**

PROPORTIONS



Sample Image Used



ADDITIONAL GRADING INFORMATION

Polish **EXCELLENT**
Symmetry **EXCELLENT**
Fluorescence **NONE**
Inscription(s) **IGI LG790607451**

Comments: As Grown - No indication of post-growth treatment.
This Laboratory Grown Diamond was created by High Pressure High Temperature (HPHT) growth process.
Type II

COLOR

D E F G H I J Faint Very Light Light

CLARITY

FL	IF	VS ¹⁻²	VS ¹⁻²	SI ¹⁻²	I ¹⁻³
Flawless	Internally Flawless	Very Very Slightly Included	Very Slightly Included	Slightly Included	Included

ADDITIONAL GRADING INFORMATION

Polish **EXCELLENT**
Symmetry **EXCELLENT**
Fluorescence **NONE**
Inscription(s) **IGI LG790607451**
Comments: As Grown - No indication of post-growth treatment.
This Laboratory Grown Diamond was created by High Pressure High Temperature (HPHT) growth process.
Type II



IGI

April 22, 2026
IGI Report No LG790607451
ROUND BRILLIANT
6.47 - 6.50 X 4.02 MM
1.04 CARAT
Color Grade **D**
Clarity Grade **IF**
Depth **62%**
Table **57%**
Girdle **Medium To Slightly Thick (Faceted)**
Culet **Pointed**
Polish **EXCELLENT**
Symmetry **EXCELLENT**
Fluorescence **NONE**
Inscriptions(s) **IGI LG790607451**
Comments: As Grown - No indication of post-growth treatment.
This Laboratory Grown Diamond was created by High Pressure High Temperature (HPHT) growth process.
Type II