



LABORATORY GROWN DIAMOND REPORT

April 13, 2026
 IGI Report Number **LG790606828**
 Description **LABORATORY GROWN DIAMOND**
 Shape and Cutting Style **PEAR BRILLIANT**
 Measurements **6.98 X 4.52 X 2.78 MM**

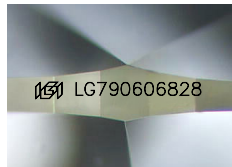
GRADING RESULTS

Carat Weight **0.53 CARAT**
 Color Grade **D**
 Clarity Grade **VVS 1**

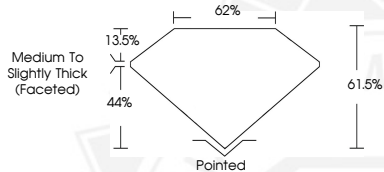
ADDITIONAL GRADING INFORMATION

Polish **EXCELLENT**
 Symmetry **EXCELLENT**
 Fluorescence **NONE**
 Inscription(s) **IGI LG790606828**

Comments: As Grown - No indication of post-growth treatment. This Laboratory Grown Diamond was created by High Pressure High Temperature (HPHT) growth process. Type II



Sample Image Used



April 13, 2026
 IGI Report Number **LG790606828**
PEAR BRILLIANT
LABORATORY GROWN DIAMOND
6.98 X 4.52 X 2.78 MM
 Carat Weight **0.53 CARAT**
 Color Grade **D**
 Clarity Grade **VVS 1**
 Polish **EXCELLENT**
 Symmetry **EXCELLENT**
 Fluorescence **NONE**
 Inscription(s) **IGI LG790606828**

Comments: As Grown - No indication of post-growth treatment. This Laboratory Grown Diamond was created by High Pressure High Temperature (HPHT) growth process. Type II



April 13, 2026
 IGI Report Number **LG790606828**
PEAR BRILLIANT
LABORATORY GROWN DIAMOND
6.98 X 4.52 X 2.78 MM
 Carat Weight **0.53 CARAT**
 Color Grade **D**
 Clarity Grade **VVS 1**
 Polish **EXCELLENT**
 Symmetry **EXCELLENT**
 Fluorescence **NONE**
 Inscription(s) **IGI LG790606828**

Comments: As Grown - No indication of post-growth treatment. This Laboratory Grown Diamond was created by High Pressure High Temperature (HPHT) growth process. Type II



THIS DOCUMENT WAS PRODUCED WITH THE FOLLOWING SECURITY MEASURES: SPECIAL DOCUMENT PAPER, INK SCREENS, WATERMARK, BACKGROUND DESIGNS, HOLOGRAM AND OTHER SECURITY FEATURES NOT LISTED AND DO EXCEED DOCUMENT SECURITY INDUSTRY GUIDELINES.