



ELECTRONIC COPY

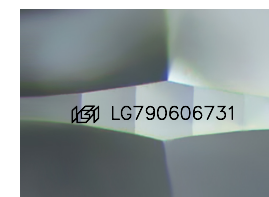
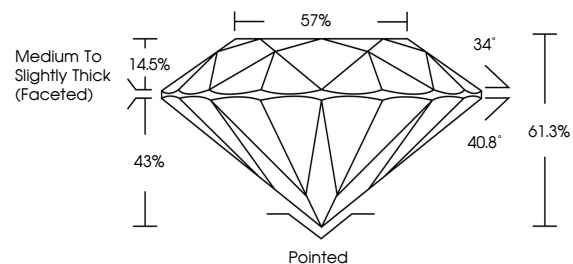
LG790606731
Report verification at igi.org



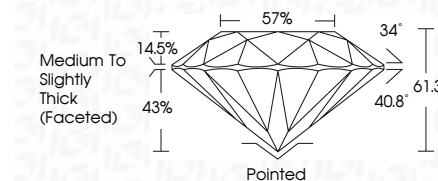
April 22, 2026
IGI Report Number **LG790606731**
Description **LABORATORY GROWN DIAMOND**
Shape and Cutting Style **ROUND BRILLIANT**
Measurements **9.92 - 9.96 X 6.10 MM**
GRADING RESULTS
Carat Weight **3.70 CARATS**
Color Grade **E**
Clarity Grade **FLAWLESS**
Cut Grade **IDEAL**

April 22, 2026
IGI Report Number **LG790606731**
Description **LABORATORY GROWN DIAMOND**
Shape and Cutting Style **ROUND BRILLIANT**
Measurements **9.92 - 9.96 X 6.10 MM**
GRADING RESULTS
Carat Weight **3.70 CARATS**
Color Grade **E**
Clarity Grade **FLAWLESS**
Cut Grade **IDEAL**

PROPORTIONS



Sample Image Used



ADDITIONAL GRADING INFORMATION
Polish **EXCELLENT**
Symmetry **EXCELLENT**
Fluorescence **NONE**
Inscription(s) **IGI LG790606731**

Comments: As Grown - No indication of post-growth treatment.
This Laboratory Grown Diamond was created by High Pressure High Temperature (HPHT) growth process.
Type II

COLOR

D E F G H I J Faint Very Light Light

CLARITY

FL	IF	VS ¹⁻²	VS ¹⁻²	SI ¹⁻²	I ¹⁻³
Flawless	Internally Flawless	Very Very Slightly Included	Very Slightly Included	Slightly Included	Included

ADDITIONAL GRADING INFORMATION

Polish **EXCELLENT**
Symmetry **EXCELLENT**
Fluorescence **NONE**
Inscription(s) **IGI LG790606731**
Comments: As Grown - No indication of post-growth treatment.
This Laboratory Grown Diamond was created by High Pressure High Temperature (HPHT) growth process.
Type II



IGI



April 22, 2026
IGI Report No LG790606731
ROUND BRILLIANT
9.92 - 9.96 X 6.10 MM
3.70 CARATS
E
FLAWLESS
IDEAL
61.3%
57%
Medium To Slightly Thick (Faceted)
Pointed
EXCELLENT
EXCELLENT
NONE
IGI LG790606731
Comments: As Grown - No indication of post-growth treatment.
This Laboratory Grown Diamond was created by High Pressure High Temperature (HPHT) growth process.
Type II