



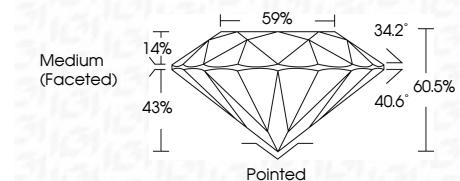
ELECTRONIC COPY

LG790606634
Report verification at igi.org



April 18, 2026
IGI Report Number **LG790606634**
Description **LABORATORY GROWN DIAMOND**
Shape and Cutting Style **ROUND BRILLIANT**
Measurements **8.77 - 8.81 X 5.32 MM**

GRADING RESULTS
Carat Weight **2.54 CARATS**
Color Grade **FANCY VIVID PINK**
Clarity Grade **VVS 2**
Cut Grade **IDEAL**



ADDITIONAL GRADING INFORMATION
Polish **EXCELLENT**
Symmetry **EXCELLENT**
Fluorescence **SLIGHT**
Inscription(s) **IGI LG790606634**
Comments: This Laboratory Grown Diamond was created by Chemical Vapor Deposition (CVD) growth process. Indications of post-growth treatment.

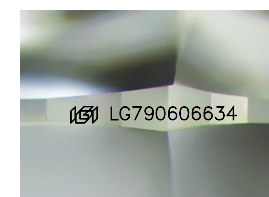


April 18, 2026
IGI Report No LG790606634
ROUND BRILLIANT
8.77 - 8.81 X 5.32 MM
2.54 CARATS
FANCY VIVID PINK
VVS 2
IDEAL
60.5%
59%
Medium (Faceted)

Culet
Polish
Symmetry
Fluorescence
Inscription(s)

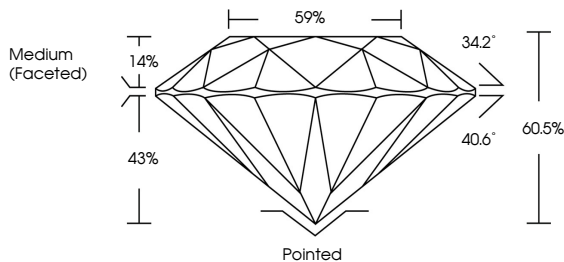
Pointed
EXCELLENT
EXCELLENT
SLIGHT
IGI LG790606634

Comments: This Laboratory Grown Diamond was created by Chemical Vapor Deposition (CVD) growth process. Indications of post-growth treatment.

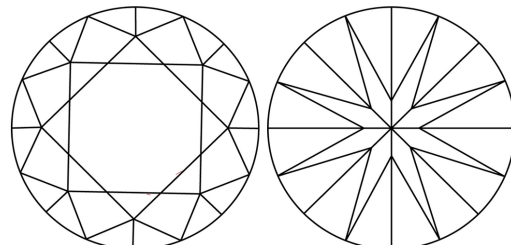


Sample Image Used

PROPORTIONS



CLARITY CHARACTERISTICS



KEY TO SYMBOLS
Red symbols indicate internal characteristics.
Green symbols indicate external characteristics.

COLOR

D	E	F	G	H	I	J	Faint	Very Light	Light
---	---	---	---	---	---	---	-------	------------	-------

CLARITY

FL	IF	VVS ¹⁻²	VS ¹⁻²	SI ¹⁻²	I ¹⁻³
Flawless	Internally Flawless	Very Very Slightly Included	Very Slightly Included	Slightly Included	Included

