



ELECTRONIC COPY

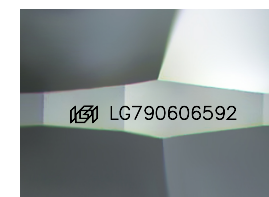
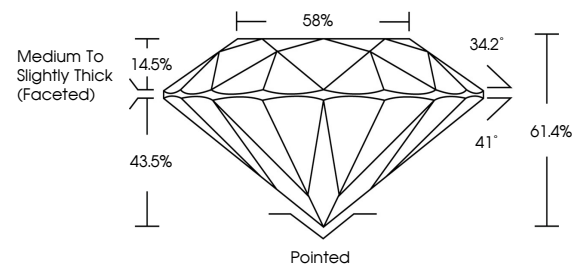
LG790606592
Report verification at igi.org



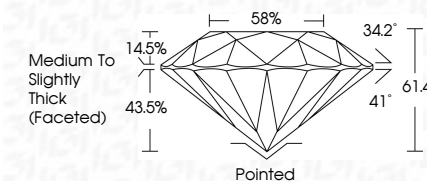
April 16, 2026
IGI Report Number **LG790606592**
Description **LABORATORY GROWN DIAMOND**
Shape and Cutting Style **ROUND BRILLIANT**
Measurements **6.43 - 6.46 X 3.96 MM**
GRADING RESULTS
Carat Weight **1.01 CARAT**
Color Grade **FANCY VIVID BLUE**
Clarity Grade **VVS 2**
Cut Grade **IDEAL**

April 16, 2026
IGI Report Number **LG790606592**
Description **LABORATORY GROWN DIAMOND**
Shape and Cutting Style **ROUND BRILLIANT**
Measurements **6.43 - 6.46 X 3.96 MM**
GRADING RESULTS
Carat Weight **1.01 CARAT**
Color Grade **FANCY VIVID BLUE**
Clarity Grade **VVS 2**
Cut Grade **IDEAL**

PROPORTIONS



Sample Image Used



ADDITIONAL GRADING INFORMATION

Polish **EXCELLENT**
Symmetry **EXCELLENT**
Fluorescence **NONE**
Inscription(s) **IGI LG790606592**

Comments: This Laboratory Grown Diamond was created by High Pressure High Temperature (HPHT) growth process. Indications of post-growth treatment.

COLOR

D E F G H I J Faint Very Light Light

CLARITY

FL	IF	VVS ¹⁻²	VS ¹⁻²	SI ¹⁻²	I ¹⁻³
Flawless	Internally Flawless	Very Very Slightly Included	Very Slightly Included	Slightly Included	Included

ADDITIONAL GRADING INFORMATION

Polish **EXCELLENT**
Symmetry **EXCELLENT**
Fluorescence **NONE**
Inscription(s) **IGI LG790606592**
Comments: This Laboratory Grown Diamond was created by High Pressure High Temperature (HPHT) growth process. Indications of post-growth treatment.



IGI



April 16, 2026
IGI Report No LG790606592
ROUND BRILLIANT
6.43 - 6.46 X 3.96 MM
1.01 CARAT
FANCY VIVID BLUE
VVS 2
IDEAL
61.4%
58%
Medium To Slightly Thick (Faceted)
Pointed
EXCELLENT
EXCELLENT
NONE
IGI LG790606592
Comments: This Laboratory Grown Diamond was created by High Pressure High Temperature (HPHT) growth process. Indications of post-growth treatment.