



ELECTRONIC COPY

LG790606569
Report verification at igi.org



April 17, 2026
IGI Report Number **LG790606569**
Description **LABORATORY GROWN DIAMOND**
Shape and Cutting Style **CUT CORNERED
RECTANGULAR MODIFIED
BRILLIANT**
Measurements **6.95 X 4.94 X 3.27 MM**
GRADING RESULTS
Carat Weight **1.01 CARAT**
Color Grade **FANCY VIVID PINK**
Clarity Grade **VVS 2**

April 17, 2026
IGI Report Number **LG790606569**
Description **LABORATORY GROWN DIAMOND**
Shape and Cutting Style **CUT CORNERED RECTANGULAR
MODIFIED BRILLIANT**
Measurements **6.95 X 4.94 X 3.27 MM**

GRADING RESULTS

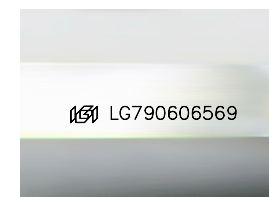
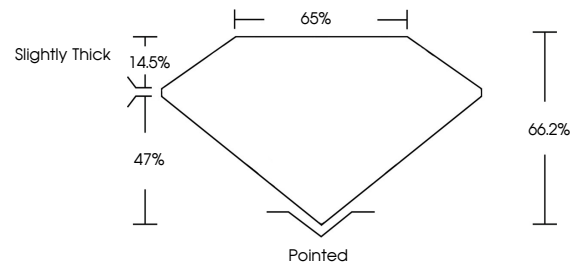
Carat Weight **1.01 CARAT**
Color Grade **FANCY VIVID PINK**
Clarity Grade **VVS 2**

ADDITIONAL GRADING INFORMATION

Polish **EXCELLENT**
Symmetry **EXCELLENT**
Fluorescence **SLIGHT**
Inscription(s) **IGI LG790606569**

Comments: This Laboratory Grown Diamond was created by Chemical Vapor Deposition (CVD) growth process. Indications of post-growth treatment.

PROPORTIONS



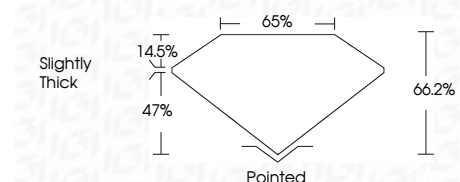
Sample Image Used

COLOR

D E F G H I J Faint Very Light Light

CLARITY

FL	IF	VVS ¹⁻²	VS ¹⁻²	SI ¹⁻²	I ¹⁻³
Flawless	Internally Flawless	Very Very Slightly Included	Very Slightly Included	Slightly Included	Included



ADDITIONAL GRADING INFORMATION

Polish **EXCELLENT**
Symmetry **EXCELLENT**
Fluorescence **SLIGHT**
Inscription(s) **IGI LG790606569**
Comments: This Laboratory Grown Diamond was created by Chemical Vapor Deposition (CVD) growth process. Indications of post-growth treatment.



April 17, 2026
IGI Report No **LG790606569**
CUT CORNERED RECT. MODIFIED BRILLIANT
6.95 X 4.94 X 3.27 MM
Carat Weight **1.01 CARAT**
Color Grade **FANCY VIVID PINK**
Clarity Grade **VVS 2**
Table **14.5%**
Depth **47%**
Girdle **Slightly Thick**
Culet **Pointed**
Polish **EXCELLENT**
Symmetry **EXCELLENT**
Fluorescence **SLIGHT**
Inscription(s) **IGI LG790606569**

Comments: This Laboratory Grown Diamond was created by Chemical Vapor Deposition (CVD) growth process. Indications of post-growth treatment.