



ELECTRONIC COPY

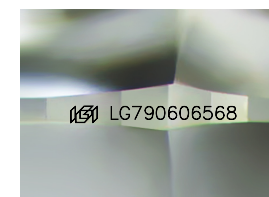
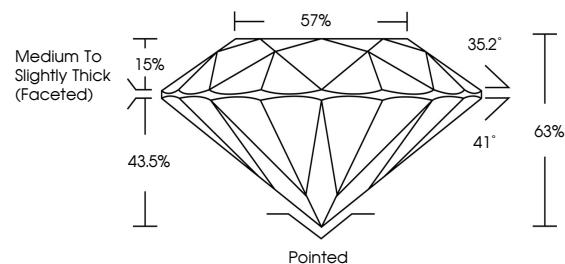
LG790606568
Report verification at igi.org



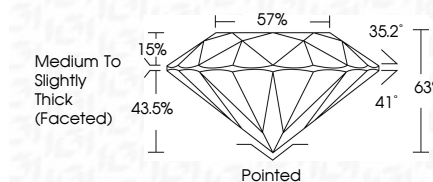
April 17, 2026
IGI Report Number **LG790606568**
Description **LABORATORY GROWN DIAMOND**
Shape and Cutting Style **ROUND BRILLIANT**
Measurements **6.34 - 6.40 X 4.01 MM**
GRADING RESULTS
Carat Weight **1.01 CARAT**
Color Grade **FANCY VIVID PINK**
Clarity Grade **VVS 1**
Cut Grade **EXCELLENT**

April 17, 2026
IGI Report Number **LG790606568**
Description **LABORATORY GROWN DIAMOND**
Shape and Cutting Style **ROUND BRILLIANT**
Measurements **6.34 - 6.40 X 4.01 MM**
GRADING RESULTS
Carat Weight **1.01 CARAT**
Color Grade **FANCY VIVID PINK**
Clarity Grade **VVS 1**
Cut Grade **EXCELLENT**

PROPORTIONS



Sample Image Used



ADDITIONAL GRADING INFORMATION
Polish **EXCELLENT**
Symmetry **EXCELLENT**
Fluorescence **SLIGHT**
Inscription(s) **IGI LG790606568**

Comments: This Laboratory Grown Diamond was created by Chemical Vapor Deposition (CVD) growth process.
Indications of post-growth treatment.

COLOR

D E F G H I J Faint Very Light Light

CLARITY

FL	IF	VVS ¹⁻²	VS ¹⁻²	SI ¹⁻²	I ¹⁻³
Flawless	Internally Flawless	Very Very Slightly Included	Very Slightly Included	Slightly Included	Included

ADDITIONAL GRADING INFORMATION

Polish **EXCELLENT**
Symmetry **EXCELLENT**
Fluorescence **SLIGHT**
Inscription(s) **IGI LG790606568**
Comments: This Laboratory Grown Diamond was created by Chemical Vapor Deposition (CVD) growth process.
Indications of post-growth treatment.



April 17, 2026
IGI Report No LG790606568
ROUND BRILLIANT
6.34 - 6.40 X 4.01 MM
1.01 CARAT
FANCY VIVID PINK
VVS 1
EXCELLENT
63%
57%
Medium To Slightly Thick (Faceted)
Pointed
EXCELLENT
EXCELLENT
SLIGHT
IGI LG790606568
Comments: This Laboratory Grown Diamond was created by Chemical Vapor Deposition (CVD) growth process.
Indications of post-growth treatment.