



ELECTRONIC COPY

LG790606411
Report verification at igi.org



April 22, 2026
IGI Report Number **LG790606411**
Description **LABORATORY GROWN DIAMOND**
Shape and Cutting Style **CUT CORNERED
RECTANGULAR MODIFIED
BRILLIANT**
Measurements **7.16 X 4.97 X 3.35 MM**
GRADING RESULTS
Carat Weight **1.02 CARAT**
Color Grade **D**
Clarity Grade **FLAWLESS**

April 22, 2026
IGI Report Number **LG790606411**
Description **LABORATORY GROWN DIAMOND**
Shape and Cutting Style **CUT CORNERED RECTANGULAR
MODIFIED BRILLIANT**
Measurements **7.16 X 4.97 X 3.35 MM**

GRADING RESULTS

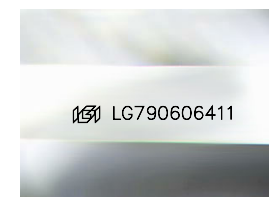
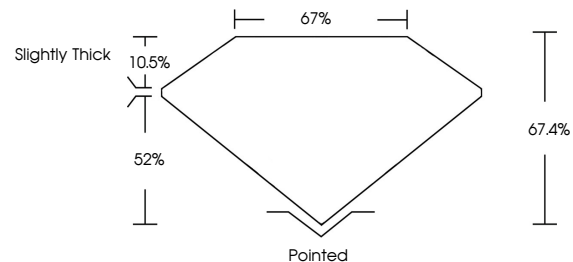
Carat Weight **1.02 CARAT**
Color Grade **D**
Clarity Grade **FLAWLESS**

ADDITIONAL GRADING INFORMATION

Polish **EXCELLENT**
Symmetry **EXCELLENT**
Fluorescence **NONE**
Inscription(s) **IGI LG790606411**

Comments: As Grown - No indication of post-growth treatment.
This Laboratory Grown Diamond was created by High Pressure High Temperature (HPHT) growth process. Type II

PROPORTIONS



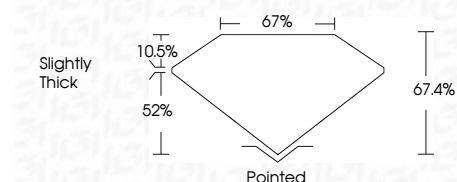
Sample Image Used

COLOR

D E F G H I J Faint Very Light Light

CLARITY

FL	IF	VS ¹⁻²	VS ¹⁻²	SI ¹⁻²	I ¹⁻³
Flawless	Internally Flawless	Very Very Slightly Included	Very Slightly Included	Slightly Included	Included



ADDITIONAL GRADING INFORMATION

Polish **EXCELLENT**
Symmetry **EXCELLENT**
Fluorescence **NONE**
Inscription(s) **IGI LG790606411**
Comments: As Grown - No indication of post-growth treatment.
This Laboratory Grown Diamond was created by High Pressure High Temperature (HPHT) growth process. Type II



IGI



April 22, 2026
IGI Report No **LG790606411**
CUT CORNERED RECT. MODIFIED BRILLIANT
7.16 X 4.97 X 3.35 MM
Carat Weight **1.02 CARAT**
Color Grade **D**
Clarity Grade **FLAWLESS**
Depth **67.4%**
Table **67%**
Girdle **Slightly Thick**
Culet **Pointed**
Polish **EXCELLENT**
Symmetry **EXCELLENT**
Fluorescence **NONE**
Inscription(s) **IGI LG790606411**

Comments: As Grown - No indication of post-growth treatment.
This Laboratory Grown Diamond was created by High Pressure High Temperature (HPHT) growth process. Type II