



ELECTRONIC COPY

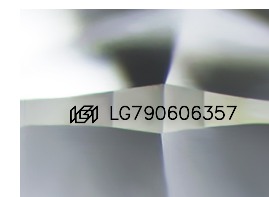
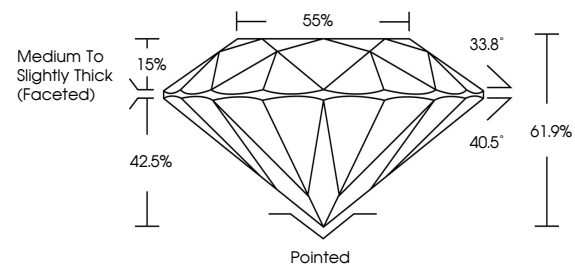
LG790606357
Report verification at igi.org



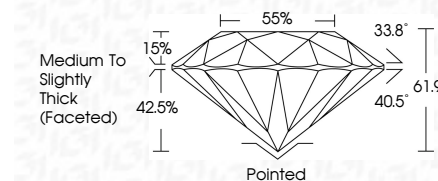
April 20, 2026
IGI Report Number **LG790606357**
Description **LABORATORY GROWN DIAMOND**
Shape and Cutting Style **ROUND BRILLIANT**
Measurements **6.54 - 6.57 X 4.06 MM**
GRADING RESULTS
Carat Weight **1.07 CARAT**
Color Grade **F**
Clarity Grade **VVS 2**
Cut Grade **IDEAL**

April 20, 2026
IGI Report Number **LG790606357**
Description **LABORATORY GROWN DIAMOND**
Shape and Cutting Style **ROUND BRILLIANT**
Measurements **6.54 - 6.57 X 4.06 MM**
GRADING RESULTS
Carat Weight **1.07 CARAT**
Color Grade **F**
Clarity Grade **VVS 2**
Cut Grade **IDEAL**

PROPORTIONS



Sample Image Used



ADDITIONAL GRADING INFORMATION
Polish **EXCELLENT**
Symmetry **EXCELLENT**
Fluorescence **NONE**
Inscription(s) **IGI LG790606357**

Comments: As Grown - No indication of post-growth treatment.
This Laboratory Grown Diamond was created by High Pressure High Temperature (HPHT) growth process.
Type II

COLOR

D E F G H I J Faint Very Light Light

CLARITY

FL	IF	VVS ¹⁻²	VS ¹⁻²	SI ¹⁻²	I ¹⁻³
Flawless	Internally Flawless	Very Very Slightly Included	Very Slightly Included	Slightly Included	Included

ADDITIONAL GRADING INFORMATION

Polish **EXCELLENT**
Symmetry **EXCELLENT**
Fluorescence **NONE**
Inscription(s) **IGI LG790606357**
Comments: As Grown - No indication of post-growth treatment.
This Laboratory Grown Diamond was created by High Pressure High Temperature (HPHT) growth process.
Type II



IGI



April 20, 2026
IGI Report No **LG790606357**
ROUND BRILLIANT
6.54 - 6.57 X 4.06 MM
Carat Weight **1.07 CARAT**
Color Grade **F**
Clarity Grade **VVS 2**
Cut Grade **IDEAL**
Depth **61.9%**
Table **15%**
Girdle **Medium To Slightly Thick (Faceted)**
Culet **Pointed**
Polish **EXCELLENT**
Symmetry **EXCELLENT**
Fluorescence **NONE**
Inscriptions(s) **IGI LG790606357**
Comments: As Grown - No indication of post-growth treatment.
This Laboratory Grown Diamond was created by High Pressure High Temperature (HPHT) growth process.
Type II