



ELECTRONIC COPY

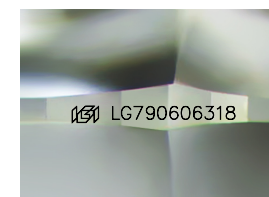
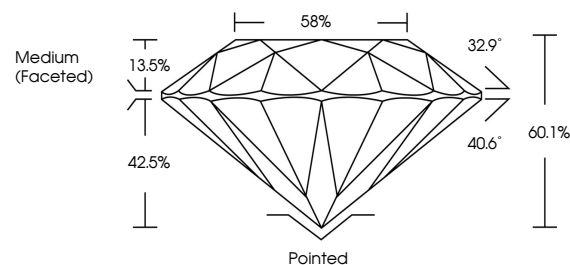
LG790606318
Report verification at igi.org



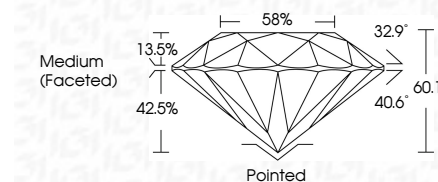
April 20, 2026
IGI Report Number **LG790606318**
Description **LABORATORY GROWN DIAMOND**
Shape and Cutting Style **ROUND BRILLIANT**
Measurements **7.36 - 7.43 X 4.44 MM**
GRADING RESULTS
Carat Weight **1.50 CARAT**
Color Grade **D**
Clarity Grade **VS 1**
Cut Grade **IDEAL**

April 20, 2026
IGI Report Number **LG790606318**
Description **LABORATORY GROWN DIAMOND**
Shape and Cutting Style **ROUND BRILLIANT**
Measurements **7.36 - 7.43 X 4.44 MM**
GRADING RESULTS
Carat Weight **1.50 CARAT**
Color Grade **D**
Clarity Grade **VS 1**
Cut Grade **IDEAL**

PROPORTIONS



Sample Image Used



ADDITIONAL GRADING INFORMATION

Polish **EXCELLENT**
Symmetry **EXCELLENT**
Fluorescence **NONE**
Inscription(s) **IGI LG790606318**

Comments: As Grown - No indication of post-growth treatment.
This Laboratory Grown Diamond was created by High Pressure High Temperature (HPHT) growth process.
Type II

COLOR

D E F G H I J Faint Very Light Light

CLARITY

FL	IF	VS ¹⁻²	VS ¹⁻²	SI ¹⁻²	I ¹⁻³
Flawless	Internally Flawless	Very Very Slightly Included	Very Slightly Included	Slightly Included	Included

ADDITIONAL GRADING INFORMATION

Polish **EXCELLENT**
Symmetry **EXCELLENT**
Fluorescence **NONE**
Inscription(s) **IGI LG790606318**
Comments: As Grown - No indication of post-growth treatment.
This Laboratory Grown Diamond was created by High Pressure High Temperature (HPHT) growth process.
Type II



IGI



April 20, 2026
IGI Report No **LG790606318**
ROUND BRILLIANT
7.36 - 7.43 X 4.44 MM
1.50 CARAT
Color Grade **D**
Clarity Grade **VS 1**
Depth **60.1%**
Table **13.5%**
Girdle **Medium (Faceted)**
Culet **Pointed**
Polish **EXCELLENT**
Symmetry **EXCELLENT**
Fluorescence **NONE**
Inscriptions(s) **IGI LG790606318**
Comments: As Grown - No indication of post-growth treatment.
This Laboratory Grown Diamond was created by High Pressure High Temperature (HPHT) growth process.
Type II