



ELECTRONIC COPY

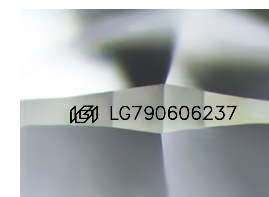
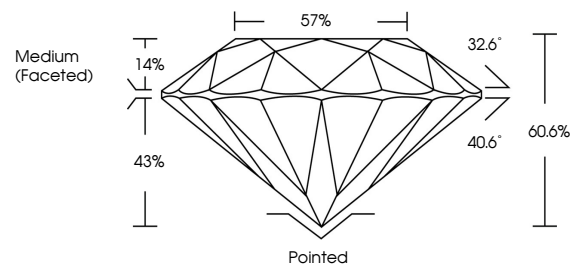
LG790606237
Report verification at igi.org



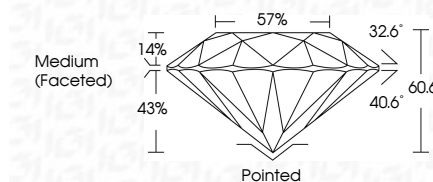
April 18, 2026
IGI Report Number **LG790606237**
Description **LABORATORY GROWN DIAMOND**
Shape and Cutting Style **ROUND BRILLIANT**
Measurements **7.41 - 7.43 X 4.50 MM**
GRADING RESULTS
Carat Weight **1.52 CARAT**
Color Grade **F**
Clarity Grade **VVS 2**
Cut Grade **EXCELLENT**

April 18, 2026
IGI Report Number **LG790606237**
Description **LABORATORY GROWN DIAMOND**
Shape and Cutting Style **ROUND BRILLIANT**
Measurements **7.41 - 7.43 X 4.50 MM**
GRADING RESULTS
Carat Weight **1.52 CARAT**
Color Grade **F**
Clarity Grade **VVS 2**
Cut Grade **EXCELLENT**

PROPORTIONS



Sample Image Used



ADDITIONAL GRADING INFORMATION
Polish **EXCELLENT**
Symmetry **EXCELLENT**
Fluorescence **NONE**
Inscription(s) **IGI LG790606237**

Comments: As Grown - No indication of post-growth treatment.
This Laboratory Grown Diamond was created by High Pressure High Temperature (HPHT) growth process.
Type II

COLOR

D E F G H I J Faint Very Light Light

CLARITY

FL	IF	VVS ¹⁻²	VS ¹⁻²	SI ¹⁻²	I ¹⁻³
Flawless	Internally Flawless	Very Very Slightly Included	Very Slightly Included	Slightly Included	Included

ADDITIONAL GRADING INFORMATION

Polish **EXCELLENT**
Symmetry **EXCELLENT**
Fluorescence **NONE**
Inscription(s) **IGI LG790606237**
Comments: As Grown - No indication of post-growth treatment.
This Laboratory Grown Diamond was created by High Pressure High Temperature (HPHT) growth process.
Type II



IGI



April 18, 2026
IGI Report No **LG790606237**
ROUND BRILLIANT
7.41 - 7.43 X 4.50 MM
Carat Weight **1.52 CARAT**
Color Grade **F**
Clarity Grade **VVS 2**
Cut Grade **EXCELLENT**
Depth **60.6%**
Table **57%**
Girdle **Medium (Faceted)**
Culet **Pointed**
Polish **EXCELLENT**
Symmetry **EXCELLENT**
Fluorescence **NONE**
Inscriptions(s) **IGI LG790606237**
Comments: As Grown - No indication of post-growth treatment.
This Laboratory Grown Diamond was created by High Pressure High Temperature (HPHT) growth process.
Type II