



ELECTRONIC COPY

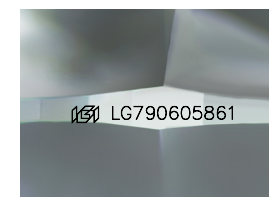
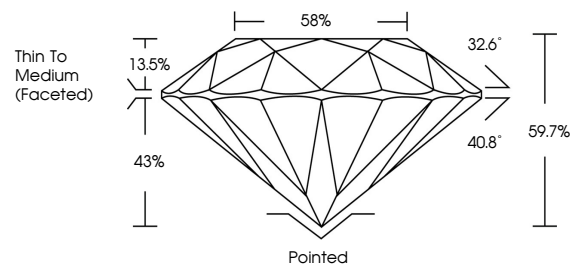
LG790605861
Report verification at igi.org



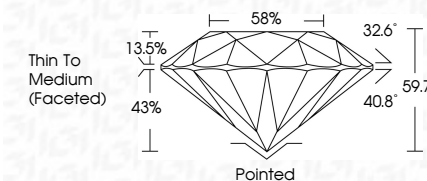
April 13, 2026
IGI Report Number **LG790605861**
Description **LABORATORY GROWN DIAMOND**
Shape and Cutting Style **ROUND BRILLIANT**
Measurements **6.64 - 6.74 X 3.98 MM**
GRADING RESULTS
Carat Weight **1.07 CARAT**
Color Grade **D**
Clarity Grade **VVS 2**
Cut Grade **EXCELLENT**

April 13, 2026
IGI Report Number **LG790605861**
Description **LABORATORY GROWN DIAMOND**
Shape and Cutting Style **ROUND BRILLIANT**
Measurements **6.64 - 6.74 X 3.98 MM**
GRADING RESULTS
Carat Weight **1.07 CARAT**
Color Grade **D**
Clarity Grade **VVS 2**
Cut Grade **EXCELLENT**

PROPORTIONS



Sample Image Used



ADDITIONAL GRADING INFORMATION
Polish **EXCELLENT**
Symmetry **EXCELLENT**
Fluorescence **NONE**
Inscription(s) **IGI LG790605861**
Comments: This Laboratory Grown Diamond was created by Chemical Vapor Deposition (CVD) growth process. Type IIa

COLOR

D E F G H I J Faint Very Light Light

CLARITY

FL	IF	VVS ¹⁻²	VS ¹⁻²	SI ¹⁻²	I ¹⁻³
Flawless	Internally Flawless	Very Very Slightly Included	Very Slightly Included	Slightly Included	Included

ADDITIONAL GRADING INFORMATION

Polish **EXCELLENT**
Symmetry **EXCELLENT**
Fluorescence **NONE**
Inscription(s) **IGI LG790605861**
Comments: This Laboratory Grown Diamond was created by Chemical Vapor Deposition (CVD) growth process. Type IIa



IGI



April 13, 2026
IGI Report No LG790605861
ROUND BRILLIANT
6.64 - 6.74 X 3.98 MM
Carat Weight **1.07 CARAT**
Color Grade **D**
Clarity Grade **VVS 2**
Cut Grade **EXCELLENT**
Depth **59.7%**
Table **58%**
Girdle **Thin To Medium (Faceted)**
Culet **Pointed**
Polish **EXCELLENT**
Symmetry **EXCELLENT**
Fluorescence **NONE**
Inscriptions(s) **IGI LG790605861**
Comments: This Laboratory Grown Diamond was created by Chemical Vapor Deposition (CVD) growth process. Type IIa