



ELECTRONIC COPY

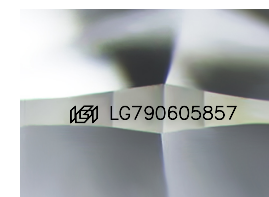
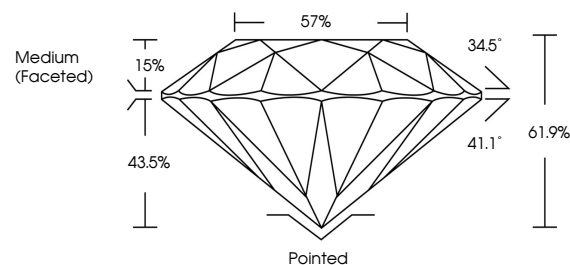
LG790605857
Report verification at igi.org



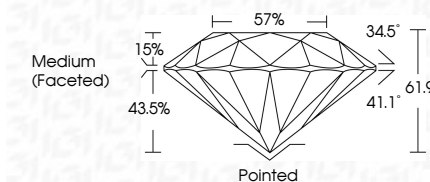
April 13, 2026
IGI Report Number **LG790605857**
Description **LABORATORY GROWN DIAMOND**
Shape and Cutting Style **ROUND BRILLIANT**
Measurements **6.54 - 6.58 X 4.06 MM**
GRADING RESULTS
Carat Weight **1.07 CARAT**
Color Grade **D**
Clarity Grade **VS 1**
Cut Grade **IDEAL**

April 13, 2026
IGI Report Number **LG790605857**
Description **LABORATORY GROWN DIAMOND**
Shape and Cutting Style **ROUND BRILLIANT**
Measurements **6.54 - 6.58 X 4.06 MM**
GRADING RESULTS
Carat Weight **1.07 CARAT**
Color Grade **D**
Clarity Grade **VS 1**
Cut Grade **IDEAL**

PROPORTIONS



Sample Image Used



ADDITIONAL GRADING INFORMATION

Polish **EXCELLENT**
Symmetry **EXCELLENT**
Fluorescence **NONE**
Inscription(s) **IGI LG790605857**

Comments: This Laboratory Grown Diamond was created by Chemical Vapor Deposition (CVD) growth process. Type IIa

ADDITIONAL GRADING INFORMATION

Polish **EXCELLENT**
Symmetry **EXCELLENT**
Fluorescence **NONE**
Inscription(s) **IGI LG790605857**
Comments: This Laboratory Grown Diamond was created by Chemical Vapor Deposition (CVD) growth process. Type IIa

COLOR

D E F G H I J Faint Very Light Light

CLARITY

FL	IF	VS ¹⁻²	VS ¹⁻²	SI ¹⁻²	I ¹⁻³
Flawless	Internally Flawless	Very Very Slightly Included	Very Slightly Included	Slightly Included	Included



IGI



April 13, 2026
IGI Report No **LG790605857**
ROUND BRILLIANT
6.54 - 6.58 X 4.06 MM
1.07 CARAT
Color Grade **D**
Clarity Grade **VS 1**
Depth **61.9%**
Table **57%**
Girdle **Medium (Faceted)**
Culet **Pointed**
Polish **EXCELLENT**
Symmetry **EXCELLENT**
Fluorescence **NONE**
Inscriptions(s) **IGI LG790605857**
Comments: This Laboratory Grown Diamond was created by Chemical Vapor Deposition (CVD) growth process. Type IIa