



**ELECTRONIC COPY**

LG790605789  
Report verification at igi.org



April 13, 2026  
IGI Report Number **LG790605789**  
Description **LABORATORY GROWN DIAMOND**  
Shape and Cutting Style **ROUND BRILLIANT**  
Measurements **6.37 - 6.39 X 4.00 MM**  
**GRADING RESULTS**  
Carat Weight **1.01 CARAT**  
Color Grade **D**  
Clarity Grade **VS 1**  
Cut Grade **EXCELLENT**

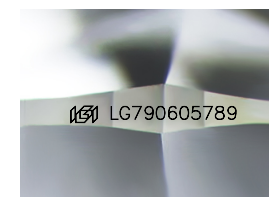
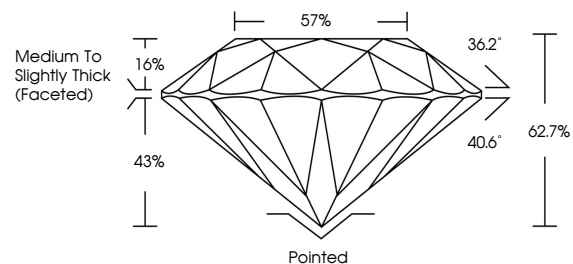
April 13, 2026  
IGI Report Number **LG790605789**  
Description **LABORATORY GROWN DIAMOND**  
Shape and Cutting Style **ROUND BRILLIANT**  
Measurements **6.37 - 6.39 X 4.00 MM**  
**GRADING RESULTS**  
Carat Weight **1.01 CARAT**  
Color Grade **D**  
Clarity Grade **VS 1**  
Cut Grade **EXCELLENT**

**ADDITIONAL GRADING INFORMATION**

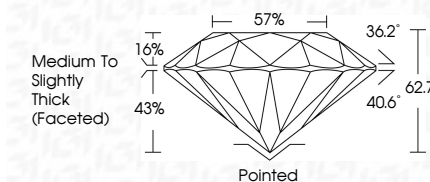
Polish **EXCELLENT**  
Symmetry **EXCELLENT**  
Fluorescence **NONE**  
Inscription(s) **LG790605789**

Comments: As Grown - No indication of post-growth treatment.  
This Laboratory Grown Diamond was created by High Pressure High Temperature (HPHT) growth process.  
Type II

**PROPORTIONS**



Sample Image Used



**COLOR**

D E F G H I J Faint Very Light Light

**CLARITY**

FL	IF	VS <sup>1-2</sup>	VS <sup>1-2</sup>	SI <sup>1-2</sup>	I <sup>1-3</sup>
Flawless	Internally Flawless	Very Very Slightly Included	Very Slightly Included	Slightly Included	Included

**ADDITIONAL GRADING INFORMATION**

Polish **EXCELLENT**  
Symmetry **EXCELLENT**  
Fluorescence **NONE**  
Inscription(s) **LG790605789**  
Comments: As Grown - No indication of post-growth treatment.  
This Laboratory Grown Diamond was created by High Pressure High Temperature (HPHT) growth process.  
Type II



**IGI**



April 13, 2026  
IGI Report No **LG790605789**  
**ROUND BRILLIANT**  
Carat Weight **1.01 CARAT**  
Color Grade **D**  
Clarity Grade **VS 1**  
Depth **62.7%**  
Table **57%**  
Girdle **Medium To Slightly Thick (Faceted)**  
Culet **Pointed**  
Polish **EXCELLENT**  
Symmetry **EXCELLENT**  
Fluorescence **NONE**  
Inscriptions(s) **LG790605789**  
Comments: As Grown - No indication of post-growth treatment.  
This Laboratory Grown Diamond was created by High Pressure High Temperature (HPHT) growth process.  
Type II