



ELECTRONIC COPY

LG790605739
Report verification at igi.org



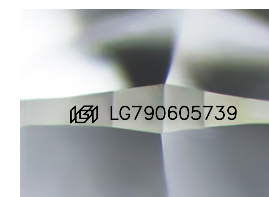
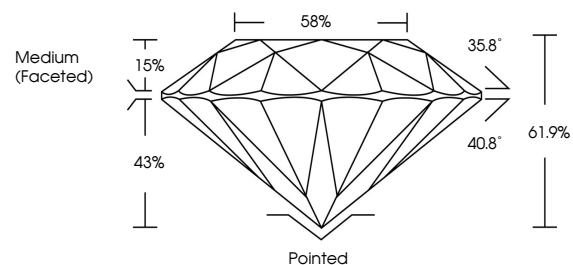
April 15, 2026
IGI Report Number **LG790605739**
Description **LABORATORY GROWN DIAMOND**
Shape and Cutting Style **ROUND BRILLIANT**
Measurements **6.41 - 6.48 X 3.98 MM**
GRADING RESULTS
Carat Weight **1.02 CARAT**
Color Grade **E**
Clarity Grade **VVS 2**
Cut Grade **IDEAL**

April 15, 2026
IGI Report Number **LG790605739**
Description **LABORATORY GROWN DIAMOND**
Shape and Cutting Style **ROUND BRILLIANT**
Measurements **6.41 - 6.48 X 3.98 MM**
GRADING RESULTS
Carat Weight **1.02 CARAT**
Color Grade **E**
Clarity Grade **VVS 2**
Cut Grade **IDEAL**

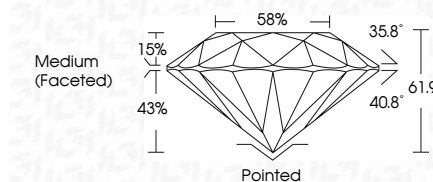
ADDITIONAL GRADING INFORMATION
Polish **EXCELLENT**
Symmetry **EXCELLENT**
Fluorescence **NONE**
Inscription(s) **IGI LG790605739**

Comments: This Laboratory Grown Diamond was created by Chemical Vapor Deposition (CVD) growth process. Type IIa

PROPORTIONS



Sample Image Used



COLOR

D E F G H I J Faint Very Light Light

CLARITY

FL	IF	VS ¹⁻²	VS ¹⁻²	SI ¹⁻²	I ¹⁻³
Flawless	Internally Flawless	Very Very Slightly Included	Very Slightly Included	Slightly Included	Included

ADDITIONAL GRADING INFORMATION

Polish **EXCELLENT**
Symmetry **EXCELLENT**
Fluorescence **NONE**
Inscription(s) **IGI LG790605739**
Comments: This Laboratory Grown Diamond was created by Chemical Vapor Deposition (CVD) growth process. Type IIa



IGI



April 15, 2026
IGI Report No **LG790605739**
ROUND BRILLIANT
6.41 - 6.48 X 3.98 MM
1.02 CARAT
E
VVS 2
IDEAL
61.9%
88%
Medium (Faceted)
Pointed
EXCELLENT
EXCELLENT
NONE
IGI LG790605739
Comments: This Laboratory Grown Diamond was created by Chemical Vapor Deposition (CVD) growth process. Type IIa