



**ELECTRONIC COPY**

LG790604198  
Report verification at igi.org



April 15, 2026

IGI Report Number **LG790604198**

Description **LABORATORY GROWN DIAMOND**

Shape and Cutting Style **CUSHION BRILLIANT**

Measurements **8.84 X 6.61 X 4.38 MM**

**GRADING RESULTS**

Carat Weight **2.04 CARATS**

Color Grade **D**

Clarity Grade **VVS 2**

**LABORATORY GROWN DIAMOND REPORT**

April 15, 2026

IGI Report Number **LG790604198**

Description **LABORATORY GROWN DIAMOND**

Shape and Cutting Style **CUSHION BRILLIANT**

Measurements **8.84 X 6.61 X 4.38 MM**

**GRADING RESULTS**

Carat Weight **2.04 CARATS**

Color Grade **D**

Clarity Grade **VVS 2**

**ADDITIONAL GRADING INFORMATION**

Polish **EXCELLENT**

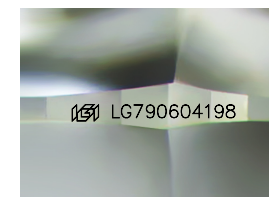
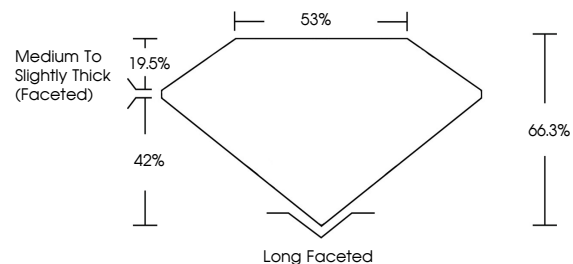
Symmetry **EXCELLENT**

Fluorescence **NONE**

Inscription(s) **IGI LG790604198**

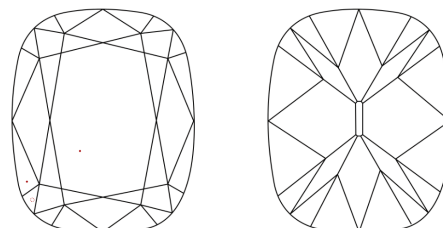
Comments: This Laboratory Grown Diamond was created by Chemical Vapor Deposition (CVD) growth process. Type IIa

**PROPORTIONS**



Sample Image Used

**CLARITY CHARACTERISTICS**



**KEY TO SYMBOLS**

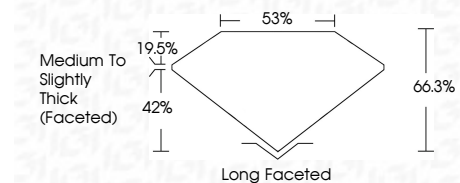
Red symbols indicate internal characteristics.  
Green symbols indicate external characteristics.

**COLOR**

D E F G H I J Faint Very Light Light

**CLARITY**

FL	IF	VVS <sup>1-2</sup>	VS <sup>1-2</sup>	SI <sup>1-2</sup>	I <sup>1-3</sup>
Flawless	Internally Flawless	Very Very Slightly Included	Very Slightly Included	Slightly Included	Included



**ADDITIONAL GRADING INFORMATION**

Polish **EXCELLENT**

Symmetry **EXCELLENT**

Fluorescence **NONE**

Inscription(s) **IGI LG790604198**

Comments: This Laboratory Grown Diamond was created by Chemical Vapor Deposition (CVD) growth process. Type IIa



**IGI**



April 15, 2026  
IGI Report No LG790604198  
**CUSHION BRILLIANT**  
8.84 X 6.61 X 4.38 MM  
2.04 CARATS  
D  
2.04 CARATS  
VVS 2  
66.3%  
42%  
53%  
Medium to Slightly Thick (Faceted)  
Long Faceted  
EXCELLENT  
EXCELLENT  
NONE  
IGI LG790604198  
Comments: This Laboratory Grown Diamond was created by Chemical Vapor Deposition (CVD) growth process. Type IIa