



**ELECTRONIC COPY**

LG790603959  
Report verification at igi.org



April 9, 2026

IGI Report Number **LG790603959**

Description **LABORATORY GROWN DIAMOND**

Shape and Cutting Style **MARQUISE BRILLIANT**

Measurements **12.63 X 7.03 X 4.23 MM**

**GRADING RESULTS**

Carat Weight **2.25 CARATS**

Color Grade **FANCY VIVID GREEN**

Clarity Grade **VS 2**

April 9, 2026

IGI Report Number **LG790603959**

Description **LABORATORY GROWN DIAMOND**

Shape and Cutting Style **MARQUISE BRILLIANT**

Measurements **12.63 X 7.03 X 4.23 MM**

**GRADING RESULTS**

Carat Weight **2.25 CARATS**

Color Grade **FANCY VIVID GREEN**

Clarity Grade **VS 2**

**ADDITIONAL GRADING INFORMATION**

Polish **EXCELLENT**

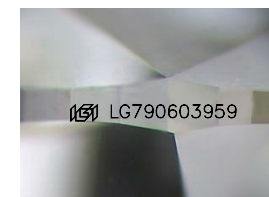
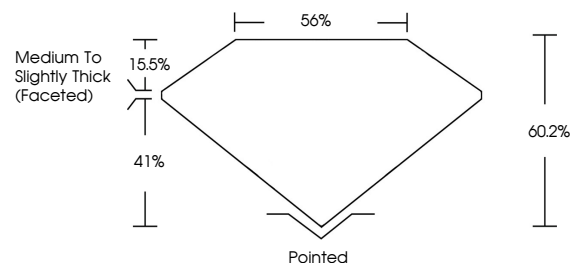
Symmetry **EXCELLENT**

Fluorescence **NONE**

Inscription(s) **LG790603959**

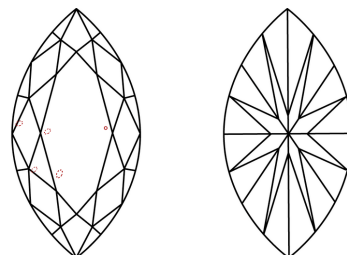
Comments: This Laboratory Grown Diamond was created by Chemical Vapor Deposition (CVD) growth process.  
Indications of post-growth treatment.

**PROPORTIONS**



Sample Image Used

**CLARITY CHARACTERISTICS**



**KEY TO SYMBOLS**

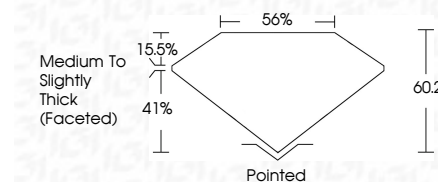
Red symbols indicate internal characteristics.  
Green symbols indicate external characteristics.

**COLOR**

D E F G H I J Faint Very Light Light

**CLARITY**

FL	IF	VS <sup>1-2</sup>	VS <sup>1-2</sup>	SI <sup>1-2</sup>	I <sup>1-3</sup>
Flawless	Internally Flawless	Very Very Slightly Included	Very Slightly Included	Slightly Included	Included



**ADDITIONAL GRADING INFORMATION**

Polish **EXCELLENT**

Symmetry **EXCELLENT**

Fluorescence **NONE**

Inscription(s) **LG790603959**

Comments: This Laboratory Grown Diamond was created by Chemical Vapor Deposition (CVD) growth process.  
Indications of post-growth treatment.



**IGI**



April 9, 2026	2.25 CARATS
IGI Report No LG790603959	FANCY VIVID GREEN
MARQUISE BRILLIANT	VS 2
12.63 X 7.03 X 4.23 MM	60.2%
Carat Weight	65%
Color Grade	Medium to Slightly Thick (Faceted)
Clarity Grade	Pointed
Depth	EXCELLENT
Table	EXCELLENT
Graile	NONE
Culet	None (LG790603959)
Polish	
Symmetry	
Fluorescence	
Inscription(s)	

Comments: This Laboratory Grown Diamond was created by Chemical Vapor Deposition (CVD) growth process.  
Indications of post-growth treatment.