



ELECTRONIC COPY

LG790603550
Report verification at igi.org



April 10, 2026
IGI Report Number **LG790603550**
Description **LABORATORY GROWN DIAMOND**
Shape and Cutting Style **PRINCESS CUT**
Measurements **8.62 X 8.39 X 5.93 MM**
GRADING RESULTS
Carat Weight **3.83 CARATS**
Color Grade **FANCY INTENSE BROWNISH PINK**
Clarity Grade **VS 2**

April 10, 2026
IGI Report Number **LG790603550**
Description **LABORATORY GROWN DIAMOND**
Shape and Cutting Style **PRINCESS CUT**
Measurements **8.62 X 8.39 X 5.93 MM**

GRADING RESULTS

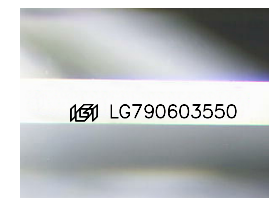
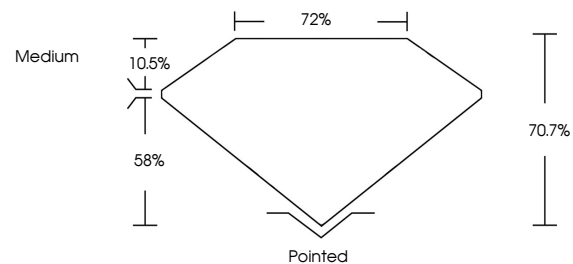
Carat Weight **3.83 CARATS**
Color Grade **FANCY INTENSE BROWNISH PINK**
Clarity Grade **VS 2**

ADDITIONAL GRADING INFORMATION

Polish **EXCELLENT**
Symmetry **EXCELLENT**
Fluorescence **SLIGHT**
Inscription(s) **IGI LG790603550**

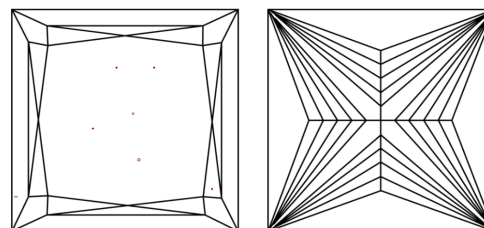
Comments: This Laboratory Grown Diamond was created by Chemical Vapor Deposition (CVD) growth process. Indications of post-growth treatment.

PROPORTIONS



Sample Image Used

CLARITY CHARACTERISTICS



KEY TO SYMBOLS

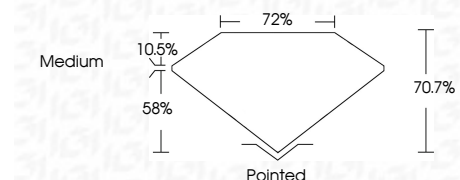
Red symbols indicate internal characteristics.
Green symbols indicate external characteristics.

COLOR

D E F G H I J Faint Very Light Light

CLARITY

FL	IF	VS ¹⁻²	VS ¹⁻²	SI ¹⁻²	I ¹⁻³
Flawless	Internally Flawless	Very Very Slightly Included	Very Slightly Included	Slightly Included	Included



ADDITIONAL GRADING INFORMATION

Polish **EXCELLENT**
Symmetry **EXCELLENT**
Fluorescence **SLIGHT**
Inscription(s) **IGI LG790603550**
Comments: This Laboratory Grown Diamond was created by Chemical Vapor Deposition (CVD) growth process. Indications of post-growth treatment.



IGI



April 10, 2026
IGI Report No LG790603550
PRINCESS CUT
3.83 CARATS
8.62 X 8.39 X 5.93 MM
Carat Weight
Color Grade FANCY INTENSE BROWNISH PINK
Clarity Grade VS 2
Depth 58%
Table 10.5%
Girdle Medium
Culet Pointed
Polish EXCELLENT
Symmetry EXCELLENT
Fluorescence SLIGHT
Inscription(s) IGI LG790603550
Comments: This Laboratory Grown Diamond was created by Chemical Vapor Deposition (CVD) growth process. Indications of post-growth treatment.