



LABORATORY GROWN DIAMOND REPORT

April 10, 2026
 IGI Report Number **LG790602741**
 Description **LABORATORY GROWN DIAMOND**
 Shape and Cutting Style **KITE STEP CUT**
 Measurements **9.39 X 6.25 X 3.46 MM**

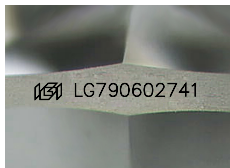
GRADING RESULTS

Carat Weight **0.94 CARAT**
 Color Grade **D**
 Clarity Grade **VS 1**

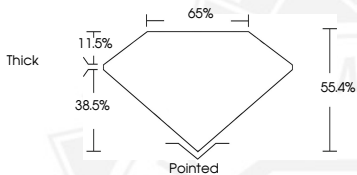
ADDITIONAL GRADING INFORMATION

Polish **EXCELLENT**
 Symmetry **EXCELLENT**
 Fluorescence **NONE**
 Inscription(s) **IGI LG790602741**

Comments: This Laboratory Grown Diamond was created by
 Chemical Vapor Deposition (CVD) growth process.
 Type IIa



Sample Image Used



April 10, 2026
 IGI Report Number **LG790602741**
 KITE STEP CUT
 LABORATORY GROWN DIAMOND
 9.39 X 6.25 X 3.46 MM
 Carat Weight **0.94 CARAT**
 Color Grade **D**
 Clarity Grade **VS 1**
 Polish **EXCELLENT**
 Symmetry **EXCELLENT**
 Fluorescence **NONE**
 Inscription(s) **IGI LG790602741**

Comments: This Laboratory Grown
 Diamond was created by
 Chemical Vapor Deposition (CVD)
 growth process. Type IIa



April 10, 2026
 IGI Report Number **LG790602741**
 KITE STEP CUT
 LABORATORY GROWN DIAMOND
 9.39 X 6.25 X 3.46 MM
 Carat Weight **0.94 CARAT**
 Color Grade **D**
 Clarity Grade **VS 1**
 Polish **EXCELLENT**
 Symmetry **EXCELLENT**
 Fluorescence **NONE**
 Inscription(s) **IGI LG790602741**

Comments: This Laboratory Grown
 Diamond was created by
 Chemical Vapor Deposition (CVD)
 growth process. Type IIa



THIS DOCUMENT WAS PRODUCED WITH THE FOLLOWING SECURITY MEASURES: SPECIAL DOCUMENT PAPER, INK SCREENS, WATERMARK, BACKGROUND DESIGNS, HOLOGRAM AND OTHER SECURITY FEATURES NOT LISTED AND DO EXCEED DOCUMENT SECURITY INDUSTRY GUIDELINES.