



ELECTRONIC COPY

LG790602314 Report verification at igi.org



April 10, 2026 IGI Report Number LG790602314 Description LABORATORY GROWN DIAMOND Shape and Cutting Style ROUND BRILLIANT Measurements 7.45 - 7.49 X 4.52 MM GRADING RESULTS Carat Weight 1.56 CARAT Color Grade FANCY INTENSE YELLOW Clarity Grade VS 2 Cut Grade EXCELLENT

April 10, 2026 IGI Report Number LG790602314 Description LABORATORY GROWN DIAMOND Shape and Cutting Style ROUND BRILLIANT Measurements 7.45 - 7.49 X 4.52 MM

GRADING RESULTS

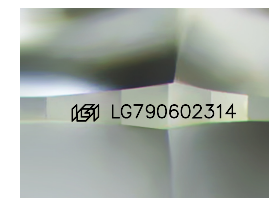
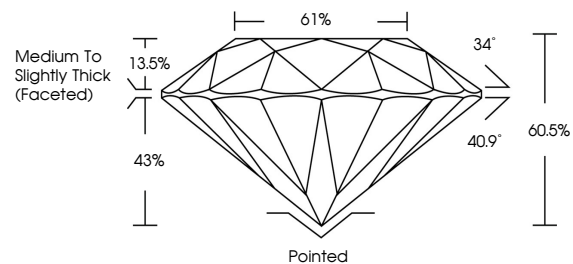
Carat Weight 1.56 CARAT Color Grade FANCY INTENSE YELLOW Clarity Grade VS 2 Cut Grade EXCELLENT

ADDITIONAL GRADING INFORMATION

Polish EXCELLENT Symmetry EXCELLENT Fluorescence NONE Inscription(s) IGI LG790602314

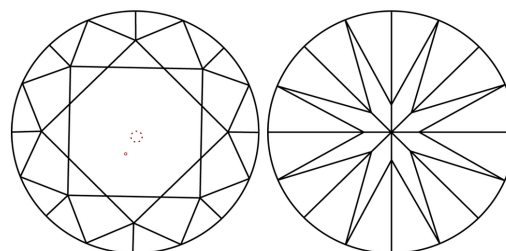
Comments: This Laboratory Grown Diamond was created by Chemical Vapor Deposition (CVD) growth process.

PROPORTIONS



Sample Image Used

CLARITY CHARACTERISTICS



KEY TO SYMBOLS

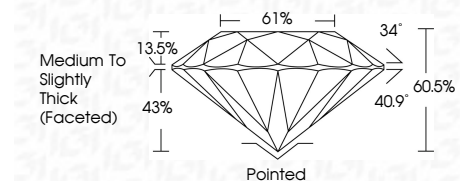
Red symbols indicate internal characteristics. Green symbols indicate external characteristics.

COLOR

D E F G H I J Faint Very Light Light

CLARITY

FL IF VS 1-2 VS 1-2 SI 1-2 I 1-3 Flawless Internally Flawless Very Very Slightly Included Very Slightly Included Slightly Included Included



ADDITIONAL GRADING INFORMATION

Polish EXCELLENT Symmetry EXCELLENT Fluorescence NONE Inscription(s) IGI LG790602314 Comments: This Laboratory Grown Diamond was created by Chemical Vapor Deposition (CVD) growth process.



April 10, 2026 IGI Report No LG790602314 ROUND BRILLIANT 7.45 - 7.49 X 4.52 MM 1.56 CARAT FANCY INTENSE YELLOW VS 2 EXCELLENT 60.5% 61% Medium To Slightly Thick (Faceted) Pointed EXCELLENT EXCELLENT NONE NONE IGI LG790602314 Comments: This Laboratory Grown Diamond was created by Chemical Vapor Deposition (CVD) growth process.