



ELECTRONIC COPY

LG790602300
Report verification at igi.org



April 10, 2026
IGI Report Number **LG790602300**
Description **LABORATORY GROWN DIAMOND**
Shape and Cutting Style **EMERALD CUT**
Measurements **12.52 X 8.80 X 5.49 MM**
GRADING RESULTS
Carat Weight **6.03 CARATS**
Color Grade **FANCY VIVID GREEN**
Clarity Grade **VVS 2**

LABORATORY GROWN DIAMOND REPORT

April 10, 2026
IGI Report Number **LG790602300**
Description **LABORATORY GROWN DIAMOND**
Shape and Cutting Style **EMERALD CUT**
Measurements **12.52 X 8.80 X 5.49 MM**

GRADING RESULTS

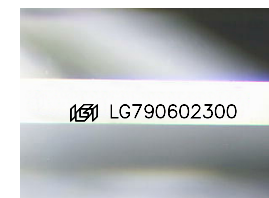
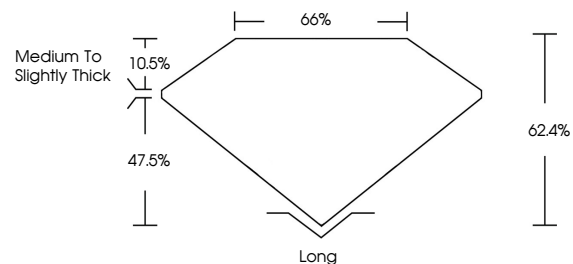
Carat Weight **6.03 CARATS**
Color Grade **FANCY VIVID GREEN**
Clarity Grade **VVS 2**

ADDITIONAL GRADING INFORMATION

Polish **EXCELLENT**
Symmetry **EXCELLENT**
Fluorescence **NONE**
Inscription(s) **IGI LG790602300**

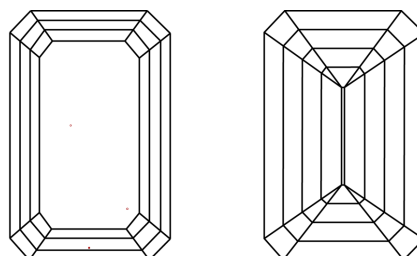
Comments: This Laboratory Grown Diamond was created by Chemical Vapor Deposition (CVD) growth process.
Indications of post-growth treatment.

PROPORTIONS



Sample Image Used

CLARITY CHARACTERISTICS



KEY TO SYMBOLS

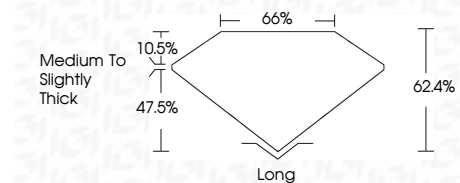
Red symbols indicate internal characteristics.
Green symbols indicate external characteristics.

COLOR

D E F G H I J Faint Very Light Light

CLARITY

FL	IF	VVS ¹⁻²	VS ¹⁻²	SI ¹⁻²	I ¹⁻³
Flawless	Internally Flawless	Very Very Slightly Included	Very Slightly Included	Slightly Included	Included



ADDITIONAL GRADING INFORMATION

Polish **EXCELLENT**
Symmetry **EXCELLENT**
Fluorescence **NONE**
Inscription(s) **IGI LG790602300**
Comments: This Laboratory Grown Diamond was created by Chemical Vapor Deposition (CVD) growth process.
Indications of post-growth treatment.



April 10, 2026
IGI Report No **LG790602300**
EMERALD CUT
12.52 X 8.80 X 5.49 MM
Carat Weight **6.03 CARATS**
Color Grade **FANCY VIVID GREEN**
Clarity Grade **VVS 2**
Depth **62.4%**
Table **66%**
Girdle **Medium to Slightly Thick**
Culet **Long**
Polish **EXCELLENT**
Symmetry **EXCELLENT**
Fluorescence **NONE**
Inscription(s) **IGI LG790602300**
Comments: This Laboratory Grown Diamond was created by Chemical Vapor Deposition (CVD) growth process.
Indications of post-growth treatment.